



National Population and Housing Census 2014

Area Specific Profiles



Rakai District

April 2017

This report presents findings of National Population and Housing Census (NPHC) 2014 undertaken by the Uganda Bureau of Statistics (UBOS). Additional information about the Census may be obtained from the UBOS Head Office, Statistics House, Plot 9 Colville Street, P. O. Box 7186, Kampala, Uganda; Telephone: +256-414 706000 Fax: +256-414 237553; E-mail: ubos@ubos.org; Website: www.ubos.org

Cover Photos: Uganda Bureau of Statistics

Recommended Citation

Uganda Bureau of Statistics 2017, The National Population and Housing Census 2014 – Area Specific Profile Series, Kampala, Uganda

FOREWORD

Demographic and socio-economic data are useful for planning and evidence-based decision making in any country. Such data are collected through Population Censuses, Demographic and Socio-economic Surveys, Civil Registration Systems and other Administrative sources. In Uganda, however, the Population and Housing Census remains the main source of demographic data, especially at the sub-national level.

Population Census taking in Uganda dates back to 1911 and since then, the country has undertaken five such Censuses. The most recent, the National Population and Housing Census 2014, was undertaken under the theme 'Counting for Planning and Improved Service Delivery'. The enumeration for the 2014 Census was conducted in August/September 2014. The Uganda Bureau of Statistics (UBOS) worked closely with different Government Ministries, Departments and Agencies (MDAs) as well as Local Governments (LGs) to undertake the census exercise.

The 2014 Census provides several statistics on different aspects of the population. These include the population size and distribution which is a key indicator used for resource allocation, measurement of the extent of service delivery, decision making and budgeting among others. Other information includes the characteristics of the population, those of the dwellings they live in and information on the Household based Agricultural activities.

On behalf of the Bureau, I would like to appreciate the Government of Uganda for providing the necessary resources and infrastructure for undertaking the National Population and Housing Census (NPHC) 2014. In addition, the Bureau would like to thank the Development Partners, particularly United Kingdom Aid (UKAid), the United Nations Fund for Population Activities (UNFPA) and the United Nations Children's Fund (UNICEF) for providing technical and financial support towards the Census. The Bureau would also like to thank the Media for creating awareness about the Census 2014 and, most importantly, the individual households who voluntarily provided the required information.

Together We Count



Ben Paul Mungyereza
EXECUTIVE DIRECTOR

PREFACE

The Uganda Bureau of Statistics Act No. 12 of 1998 provides for the Minister responsible for Planning to direct ‘that a Census be taken’ on any matter specified in the Act. This was the legal basis for conducting the National Population and Housing Census (NPHC) 2014. The long-term objective of the NPHC 2014 is to ensure availability of bench-mark demographic and socio-economic data for use in planning, evidence based decision making, policy formulation and programme evaluation.

In order to support the planning process, the results from the Census 2014 are being released in phases as and when they become available. The Provisional Results Report was released in November, 2014 followed by the Final Results which were released in March 2016 and the Sub-county Reports in June 2016. These reports collectively provided information on the characteristics of the population and households at the national, district and sub-county levels.

The **Constituency Profiles Series** presents the characteristics of the population and household as well as the housing conditions of the population in each parliamentary constituency of the district. For convenience, however, the profiles of all constituencies in one district have been published in one report. In each report, the Appendix has selected national level tables for reference.

Uganda Bureau of Statistics (UBOS) is in the process of producing several other reports including the National Analytical Results (Monograph Series), District-level Analytical Reports and the Census Atlas. These will present detailed findings covering more indicators on different thematic areas. In addition to the above reports, the Bureau will be providing electronic datasets to facilitate deeper analysis of the data.

The Bureau, appeals to Policy Makers, Researchers and Academicians to make extensive use of this information for policy analysis and evidence-based decision-making at different levels of service delivery. Together we can harness information resources from the Census to improve service delivery and create a better Uganda.

ABOUT THE INDICATORS

Household

A group of persons who usually eat and live together. A household may be comprised of one or more persons provided they share the same meal and sleep under the same roof. The persons may be related usually in a family setting or may not be related.

Household population

All those persons who were enumerated in households. It excludes population which was enumerated on the streets (floating population) or those who were living in Institutions such as correction centres, religious institutions and health facility in-patients.

Population size

Refers to the total population count in the country or any geographical location based on the census reference night. It includes all those persons who were enumerated in households and institutions.

Population by age groups or specific age

This is the total count of the household population by a given age, age- groups or special age-groups. It excludes the non-household population.

Education characteristics/indicators

The indicators refer to specific age groups. The official school going age is 6-12 years for primary education, 13-18 years for secondary education and 19-24 years for tertiary education. However, the analysis includes the age-group 6-15 years to take into consideration those who start primary level at more than 6 years.

For those who have never been to school, we consider the age group 15 years and above on the assumption that by age 15, there are minimal chances for one joining school for the first time.

Illiteracy

This is defined as lack of the ability to read and write with understanding in any language. Persons aged 10 years and above who could not read and write responded (Codes 2, 3 and 4) to Question P21 of the Household Questionnaire. The objective of using this indicator is to shed light on the areas that need improvements in the delivery of the services.

Ownership of a birth certificate

Ownership includes all those persons (adults or children) who either had a Short Birth Certificate or a Long Birth Certificate during census enumeration. The analysis is based on specific age categories.

Parental survival and Orphanhood

Parental survival and orphanhood are derived variables which are based on two questions (P10 and P11), whether or not the biological mother/father of the respondent was still alive at the time of the census. Orphans are persons below the age of 18 who have lost any or both of their parents.

Disability

The questions P14 to P17 on functional difficulty are used to determine whether the person has a disability or not. It includes all persons aged 2 years and above. An individual is considered to be disabled if he/she has any one of the 4 questions with at least some difficulty.

Multiple disabilities refer to all persons who reported more than one functional difficulty.

Marriage and Child Bearing

Marital Status refers to all those persons who are living together and consider themselves as married. It includes all forms of consensual union whether legal or non-legal, religious or cultural or non-consensual union.

Employment

Questions on employment were eligible for all household population aged 10 years and above. Currently the age category for the working population 16 -64 years. The analysis is based on specific age groups of children 10-15 years, (other countries define a child as anyone below the age of 16, hence the age group 10-15 years).

Construction materials of the dwelling

The information is derived from the question on “materials used for the roof, floor and wall. Permanent floor materials include concrete, cement screed, tiles, wood, while permanent roof materials include roof tiles, iron sheets, asbestos and concrete.

Status of dwelling

The permanency nature of construction materials determines the status of the dwelling. The idea is to be able to classify a dwelling unit as temporary or permanent.

Access to community services

The choice of indicators is for those households that are beyond the 5 km radius for access to services (access to public/private schools, health facilities and a police station/post). The nearness of the service to the household does not take into consideration whether the services are utilized by the household or not.

Other environmental conditions – waste disposal

Any household was considered to have proper waste disposal if at the time of the census it disposed off solid waste using registered or unregistered waste vendors as well as using skip bins provided by the Municipal authority.

Owner occupied dwellings

These are disaggregated by household headship. The percentages for male and female headed households may not add up to 100. For instance among the female headed households, what proportion are owner occupied? Among the male headed households, what proportion are owner occupied?

Source of energy for lighting – electricity

In the household questionnaire, Question H14 had about four forms of electricity used for lighting (grid, generator, solar, community/thermal plant). Any household that indicated using any of the four forms was considered to have access to electricity.

Household based agricultural activities

A household engaged in agriculture is one which is engaged in any of the following:

Growing of any crops, or rearing animals or involved in bee keeping or forestry/tree growing, and any fish farming. Agricultural activities outside the district were not considered.

TABLE OF CONTENTS

FOREWORD	ii
PREFACE	iii
ABOUT THE INDICATORS	iii
INTRODUCTION	8
1.1 General Information about Uganda	8
1.2 About the National Population and Housing Census 2014	8
1.3 National Highlights of the 2014 Census Results	9
AREA SPECIFIC PROFILES	1
RAKAI DISTRICT	2
KAKUUTO COUNTY CONSTITUENCY	10
KOOKI COUNTY CONSTITUENCY	18
KYOTERA COUNTY CONSTITUENCY	26
BUYAMBA COUNTY CONSTITUENCY	34
APPENDICES	42
Appendix 1: Population by Sex and Type of Residence by District, Uganda 2014	43
Appendix 2: The Household Questionnaire for the National Population and Housing Census 2014	46

LIST OF MAPS

- Map 1: Districts of Uganda as of 1st July 2016
- Map 2: Rakai District Parliamentary Constituencies as of 1st July, 2016
- Map 3: Distribution of Population by Sub-county; Rakai District, 2014
- Map 4: Percentage Distribution of Population Aged 6-12 Years Not in School; Rakai District, 2014
- Map 5: Percentage Distribution of Youth Population aged 18-30 Years, Not in School and Not Working; Rakai District, 2014
- Map 6: Percentage Distribution of Population aged 10-19 Years, Ever Married; Rakai District, 2014
- Map 7: Percentage Distribution of Orphans aged 0-17 Years; Rakai District, 2014
- Map 8: Percentage Distribution of Households 5 Km and Over to the nearest Public Health Facility; Rakai District, 2014
- Map 9: Percentage Distribution of Households without access to Safe Water; Rakai District, 2014
- Map 10: Percentage Distribution of Households with no Toilet facility; Rakai District, 2014
- Map 11: Percentage Distribution of Households having less than 2 meals a day; Rakai District, 2014

INTRODUCTION

1.1 General Information about Uganda

Location and Size

Uganda is located in East Africa and lies across the equator, about 800 kilometres inland from the Indian Ocean. It lies between Latitude 1° 29' South and 4° 12' North of the Equator as well as Longitude 29° 34' East and 35° 0' East of Greenwich. The country is landlocked, bordered by Kenya in the East; South Sudan in the North; Democratic Republic of Congo in the West; Tanzania in the South; and Rwanda in South West. It has a total area of 241,551 square kilometres, of which the land area covers 200,523 square kilometres.

Administration

The country was divided into 116 districts (as at August/September 2014). The districts were further subdivided into 200 Counties, 1,378 Sub-counties and 6,495 Parishes. The role of these administrative units is to implement and monitor government programmes at the respective levels. Overtime, the administrative units have been sub-divided with the aim of easing administration and improving the delivery of services.

1.2 About the National Population and Housing Census 2014

The overall objective of the National Population and Housing Census (NPHC) 2014 was to provide data that are required for planning at all levels. The NPHC 2014 had three distinct phases namely, the Preparatory Phases, the Enumeration Phase and the Post Enumeration Phase.

The preparatory work for the Census 2014 started in 2008 with development of the overall strategy of undertaking the census. Other preparatory activities included development of the questionnaires, undertaking of the census mapping, conducting the Pilot Census, carrying out the census advocacy and publicity and other administrative support services.

The enumeration phase included recruitment and training of field staff, delivery of enumeration materials, conducting the main census enumeration and retrieval of materials. The census activities in the district were conducted under the overall responsibility of the Chief Administrative Officers (CAOs) or the Executive Director in the case of Kampala Capital City Authority (KCCA). All field staff underwent mandatory ten (10) day training on Census concepts and procedures.

The Census Reference Night was the night of 27th August 2014 and the enumeration was conducted on a de facto basis. The enumeration started on 28th August and continued to 7th September 2014. The Enumerators moved from household to household within the assigned Enumeration Areas (EAs) and administered the Census questionnaire to the Head of household or any other assigned household member through face to face interviews.

The data processing was centrally managed at the Bureau offices. The filled questionnaires were captured with scanning technology and the information extracted using automatic character recognition.

Data quality assurance enhances credibility, usability and utility of data. The Post Enumeration Survey (PES) was used as one of the tools to evaluate the quality of the census data through testing the completeness of coverage and accuracy. The PES enumeration was undertaken in October/November 2014, and it covered 800 EAs distributed in all the districts and Kampala Capital City Authority (KCCA).

1.3 National Highlights of the 2014 Census Results

The results of the NPHC 2014 will be published in phases. The Provisional Census Results were disseminated in November 2014. These gave the number of households and the population by sex for administrative areas down to sub-county level. The first set of the final results of the Census 2014 were published in the Main Report which was released in March 2016. The report includes information on the population size and distribution as well as characteristics of the population and the dwellings they live in. The results showed that the total population of Uganda in 2014 was 34.6 million persons as shown in Table 1.

Between 2002 and 2014, the population increased from 24.2 million to 34.6million. This implied average growth rate of 3.0 percent per annum.

Table 1: Population size and Population Growth Rates, Uganda, 1969-2014

Census year	Male	Female	Total	Inter-censal Period	Average Annual Growth Rate (%)
1969	4,812,447	4,722,604	9,535,051		
1980	6,259,837	6,376,342	12,636,179	1969-1980	2.7
1991	8,185,747	8,485,558	16,671,705	1980-1991	2.5
2002	11,824,273	12,403,024	24,227,297	1991-2002	3.2
2014	17,060,832	17,573,818	34,634,650	2002-2014	3.0

The distribution of the population among the districts is given in Appendix Table 1. Wakiso district had a population of nearly two (2) million, accounting for about six percent of the total population, while some districts were less populous, Kalangala district being the smallest with a population of 53,406 persons. As of 2016, Uganda had a total of 259 urban centres with a total urban population of 7.5 million persons. Thus, 20.2 percent of the total population lived in urban areas. Kampala Capital City was the most populous urban centre with 1.5 million persons.

Table 2 gives the distribution of the population by age. The Table shows that the population of Uganda is quite young, with the proportion of children (below 15 years of age) being 47.9 percent, while the 'Older persons' (aged 60 years and above) constituted only 2.9 percent.

Table 2: Population Distribution by Age, Sex, Residence, and Population Type, Uganda, 2014

Age	Sex		Residence		Population Type		Total
	Male	Female	Rural	Urban	Household	Institutional	
0-4	3,173,950	2,957,078	4,950,513	1,180,515	6,107,155	23,873	6,131,028
5-9	2,834,456	2,717,222	4,557,328	994,350	5,532,230	19,448	5,551,678
10-14	2,462,789	2,457,654	4,024,478	895,965	4,850,926	69,517	4,920,443
15-19	1,917,797	2,038,836	3,052,854	903,779	3,850,134	106,499	3,956,633
20-24	1,442,455	1,743,137	2,263,734	921,858	3,093,846	91,746	3,185,592
25-29	1,143,467	1,342,709	1,743,019	743,157	2,434,180	51,996	2,486,176
30-34	908,447	1,043,292	1,429,283	522,456	1,914,351	37,388	1,951,739
35-39	726,355	809,482	1,148,883	386,954	1,512,237	23,600	1,535,837
40-44	617,034	655,383	991,874	280,543	1,252,338	20,079	1,272,417
45-49	452,081	469,043	728,958	192,166	909,783	11,341	921,124
50-54	371,126	436,977	657,004	151,099	797,368	10,735	808,103
55-59	224,765	255,519	394,952	85,332	475,744	4,540	480,284
60-64	195,283	244,770	369,504	70,549	434,218	5,835	440,053
65-69	136,107	165,043	257,208	43,942	299,351	1,799	301,150
70-74	115,862	161,374	237,097	40,139	273,582	3,654	277,236
75-79	69,095	81,378	128,636	21,837	149,567	906	150,473
80-84	51,871	79,398	110,736	20,533	127,984	3,285	131,269
85-89	21,572	30,204	43,246	8,530	50,735	1,041	51,776
90-94	15,125	22,046	29,989	7,182	34,339	2,832	37,171
95 and above	18,212	26,256	37,186	7,282	41,231	3,237	44,468
Total	16,897,849	17,736,801	27,156,482	7,478,168	34,141,299	493,351	34,634,650

Characteristics of the Population

About 87 percent of the boys and girls of primary school going age (6-12 years) were attending school, while about 1 in every 10 children of primary school going age children had never been school. The Illiteracy status Rate was 72 percent among persons aged 10 years and above. Out

of the 17.7 million persons of working age (aged 14 to 64 years), 13.8 million (78 percent) were working in the (Labour Force), with the most common occupation being subsistence farming (65%).

Vulnerability can be assessed at personal and household level. At personal level, vulnerability is a state of being in which a person is likely to be in a risky situation, suffering significant physical, emotional, or mental harm that may result in his/her human rights not being fulfilled (MoGLSD, 2004). The 2014 Census measured some of the dimensions of Child Vulnerability. The results show high levels of vulnerability as highlighted below;

- One in every eight (12.5%) of children aged 6 – 12 Years were not in school;
- Two out of every 25 (8%) children less than 18 years of age were orphaned;
- One in every 16 (6%) of the girls aged 12 to 17 years had already given birth;
- One in every 15 (6.5%) of the girls aged 12 – 17 had ever been in a marriage union;
- Seven out of every 10 Children (70%) aged less than five years did not have a Birth certificate.

There was a general improvement in the demographics of the population with the Total Fertility Rate falling to 5.8 children per woman while the infant Mortality Rate decreased to 53 deaths per 1,000 live births. The Life Expectancy at Birth also increased to 63.3 years

Characteristics of the Households

The household population consisted of (99 percent of the total population.) The Census 2014 enumerated a total of 7.3 million households with a population of 34.1 million .This gave an Average Household Size of 4.7.

The ‘Tadooba’ remained the most common source of lighting being used by 52 percent of the households. Only one in every five households (20%) had access to electricity. On the other hand, Wood fuel was the most common fuel used for cooking, with only six percent (one in every 16) of the households using other fuels. Sanitation remains a challenge with only thirty percent of the households with unimproved toilet facilities. About 600,000 households did not have any toilet facility at all.

The majority of the households (69 percent) derived their livelihood from subsistence farming. Only 27% of the households depended on earned income. One in every nine households (11%) were having only one meal per day (for adults). Some of the households (11%) received remittances from abroad in cash or in kind. More than two thirds of the households (69%) had at least one member owning a Mobile phone. Ownership of a Mobile among persons aged 10 years and above was at 38 percent. The radio remains a dominant source of information and about 60 percent of the households owned a radio.

Housing Conditions

The housing sector recorded a general improvement. Overall, 67 percent of households in Uganda resided in detached dwellings. However, nearly half (47%) households resided in

dwellings with only one room for sleeping. There was also significant improvement in the materials used for construction of the dwellings. About 44% of the households resided in dwellings constructed with permanent wall material. The equivalent shares for roof and floor were 70 and 34 percent respectively.

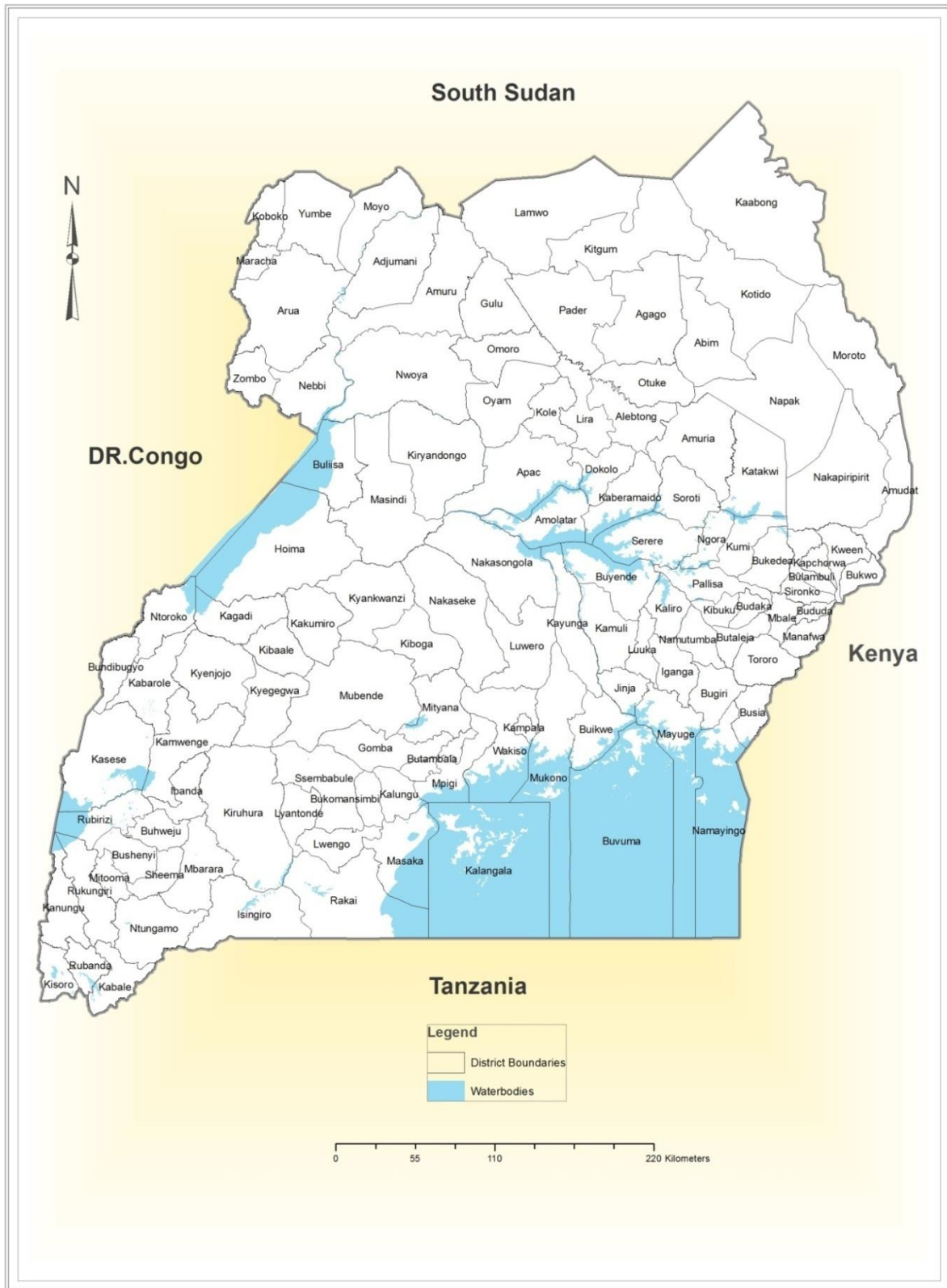
Agricultural Activities

Agriculture has remained a dominant sector in the economy. The Census revealed that a total of 5.8 million households engage in agriculture. More than two thirds (69 percent) of households derived their livelihoods from subsistence farming as the main source of earning. In terms of employment, the majority of the working population (65 percent) were subsistence farmers.

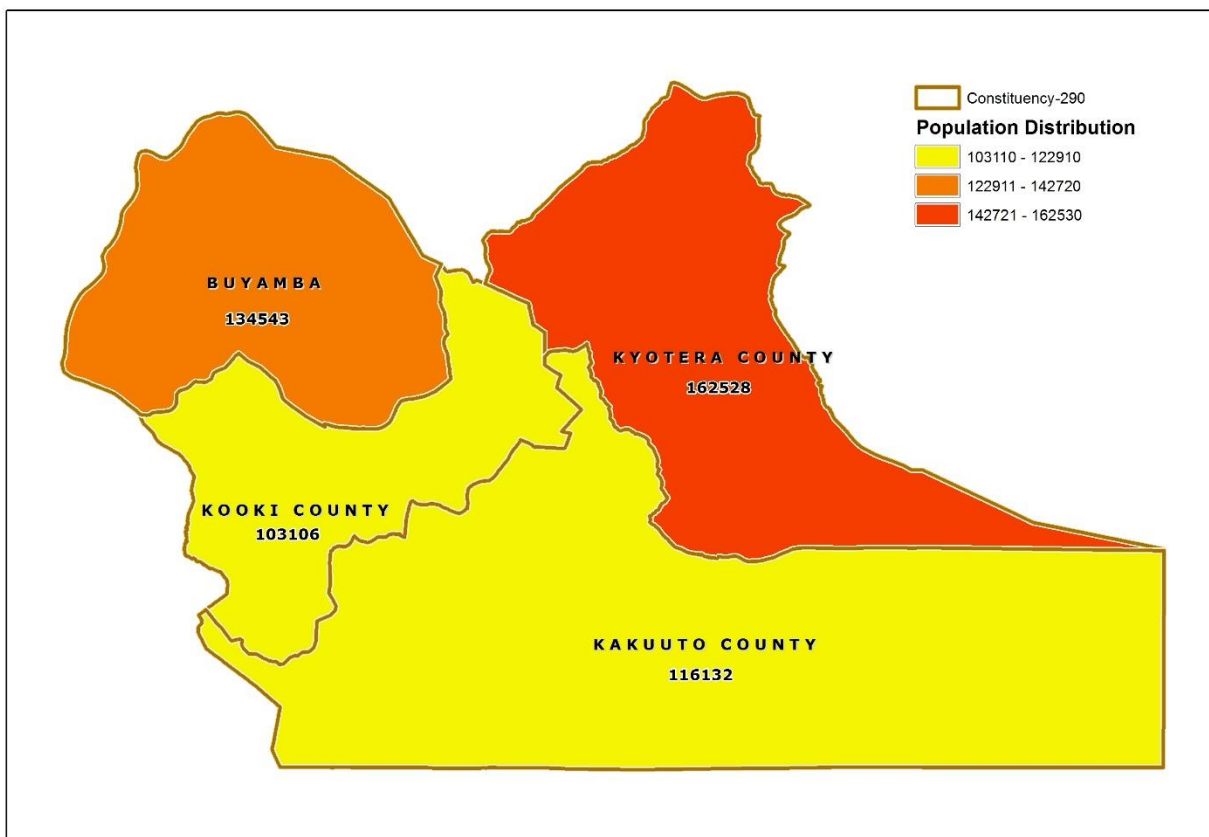
POPULATION SIZE**Table 3: Total population by age group and sex, Rakai District, 2014**

Age group	Male	Female	Total
0-9 years	93,487	85,800	179,287
10-19 years	67,541	65,919	133,460
20-39 years	56,513	68,222	124,735
40-59 years	25,857	28,079	53,936
60 years and above	10,968	13,923	24,891
Total	254,366	261,943	516,309

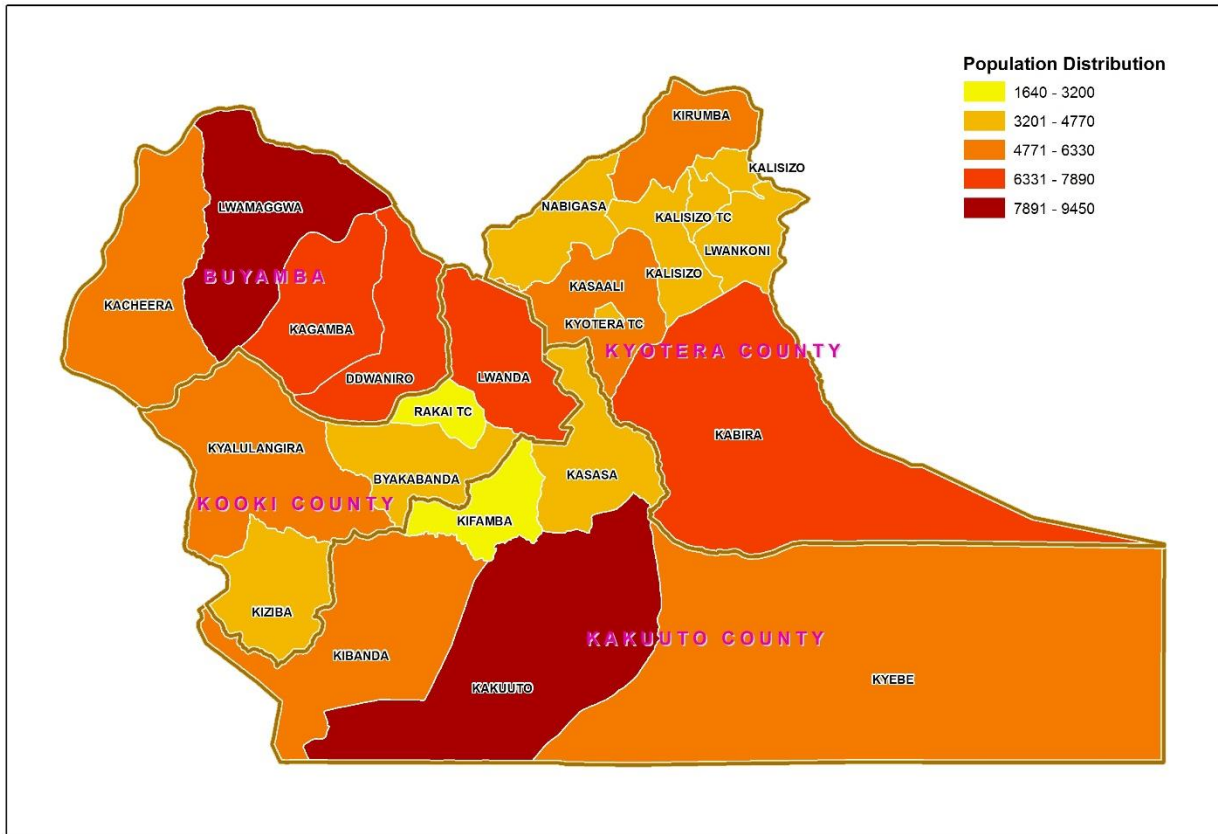
Figure 1: Map of Uganda showing Districts as of 1st July 2016



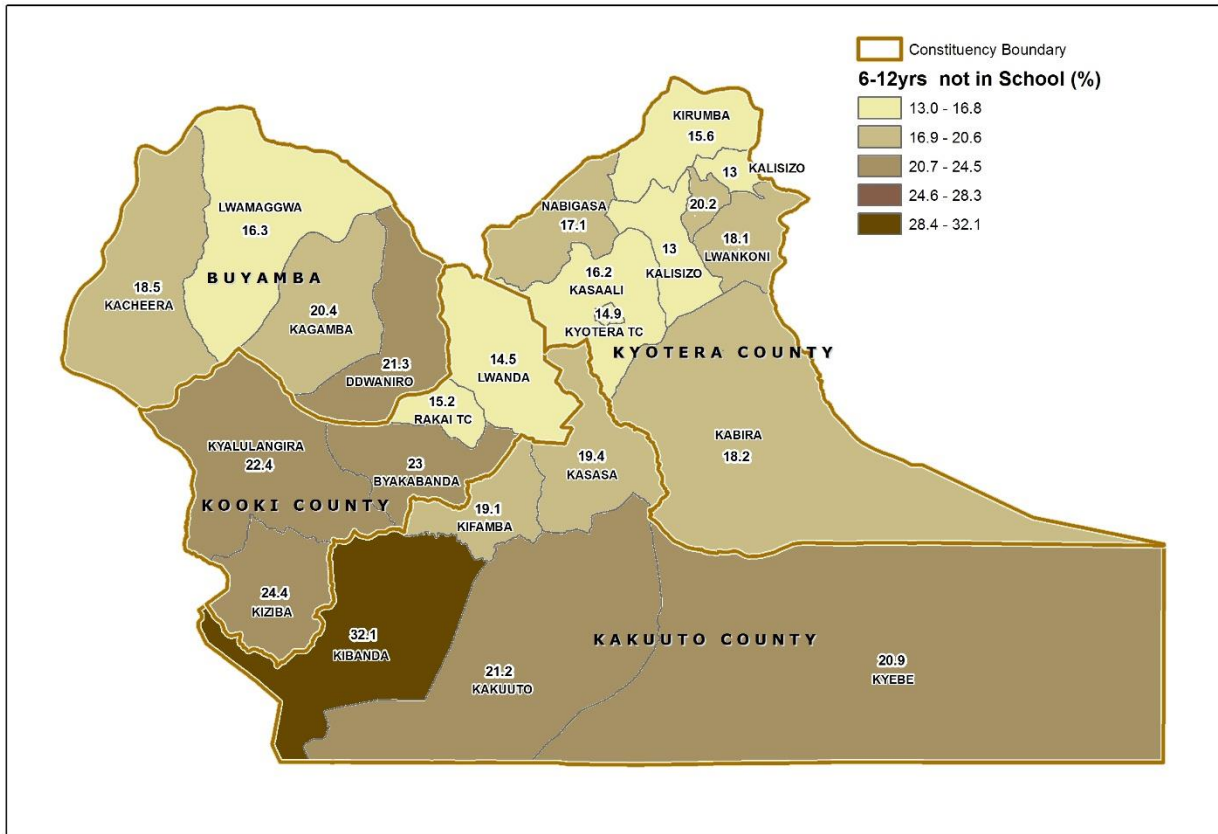
Map 2: Rakai District Parliamentary Constituencies as of 1st July, 2016



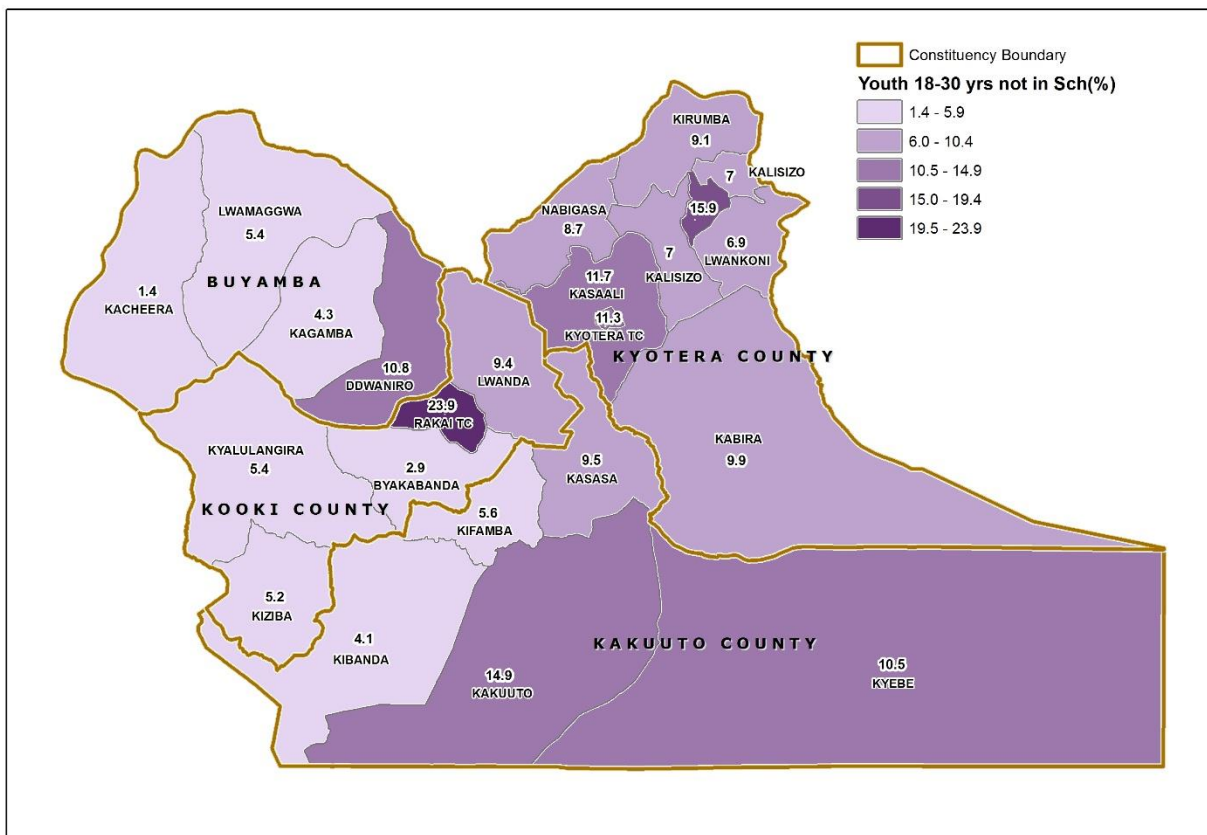
Map 3: Distribution of Population by Sub-county; Rakai District, 2014



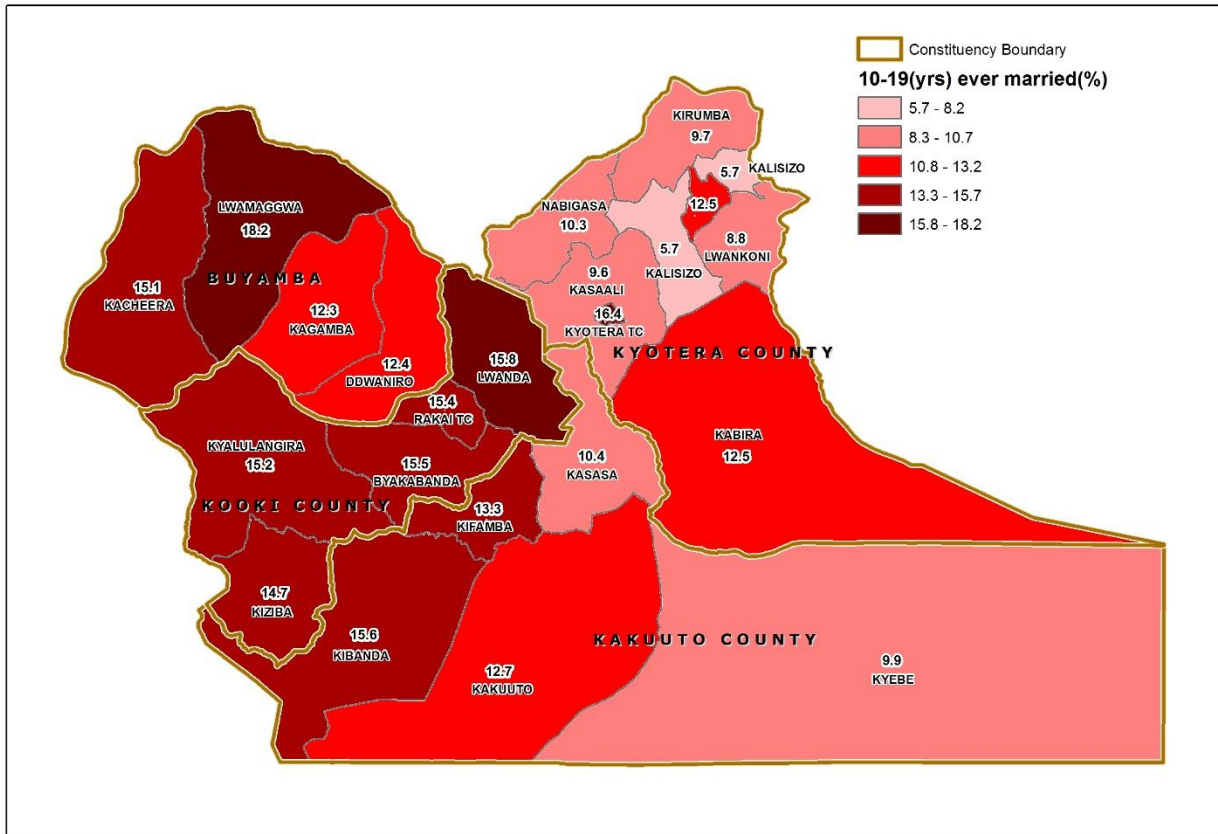
Map 4: Percentage Distribution of Population Aged 6-12 Years Not in School; Rakai District, 2014



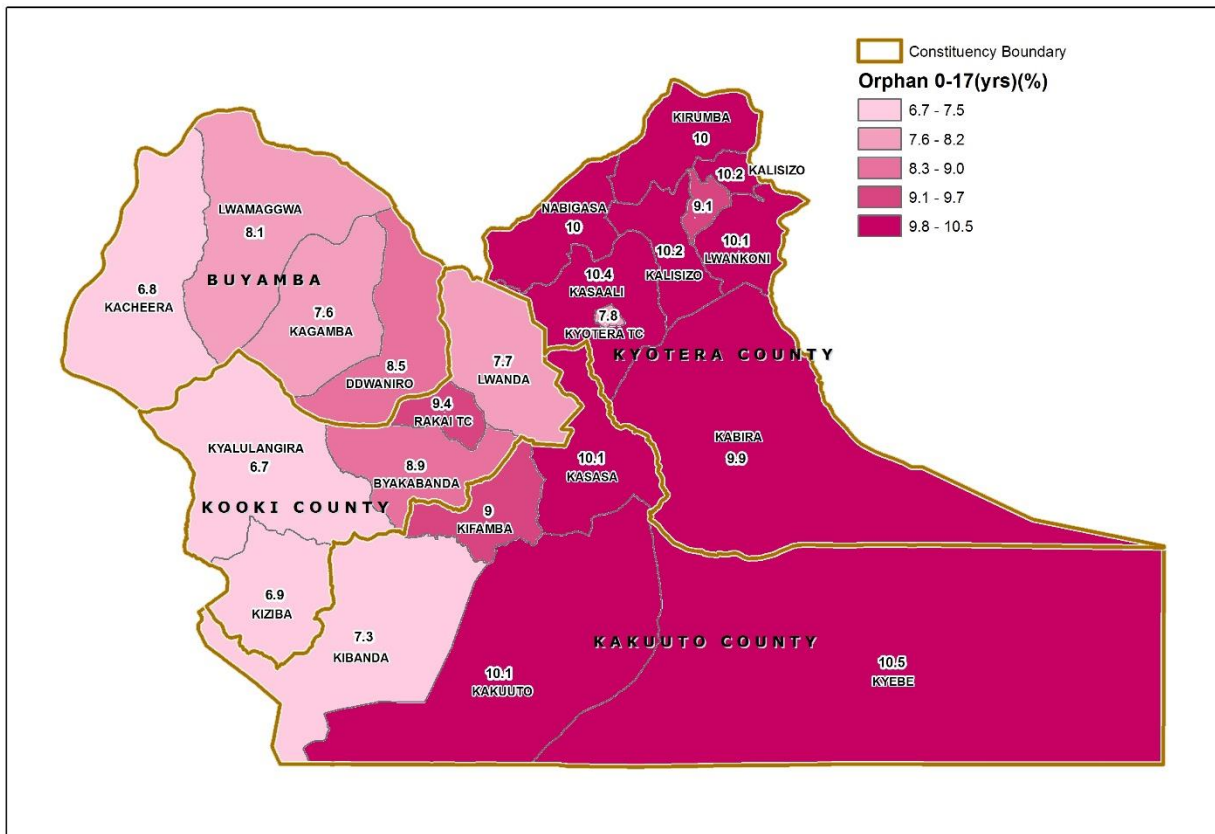
Map 5: Percentage Distribution of Youth Population aged 18-30 Years, Not in School and Not Working; Rakai District, 2014



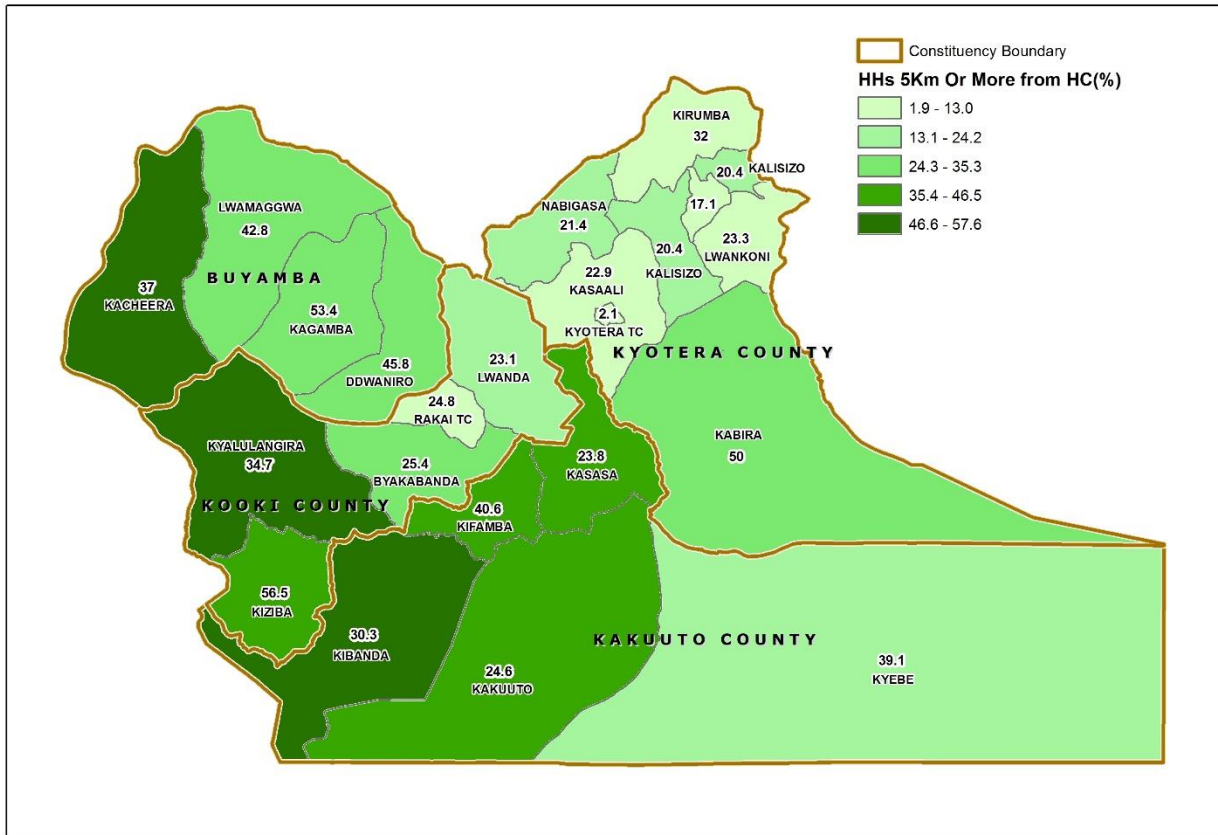
Map 6: Percentage Distribution of Population aged 10-19 Years, Ever Married; Rakai District, 2014



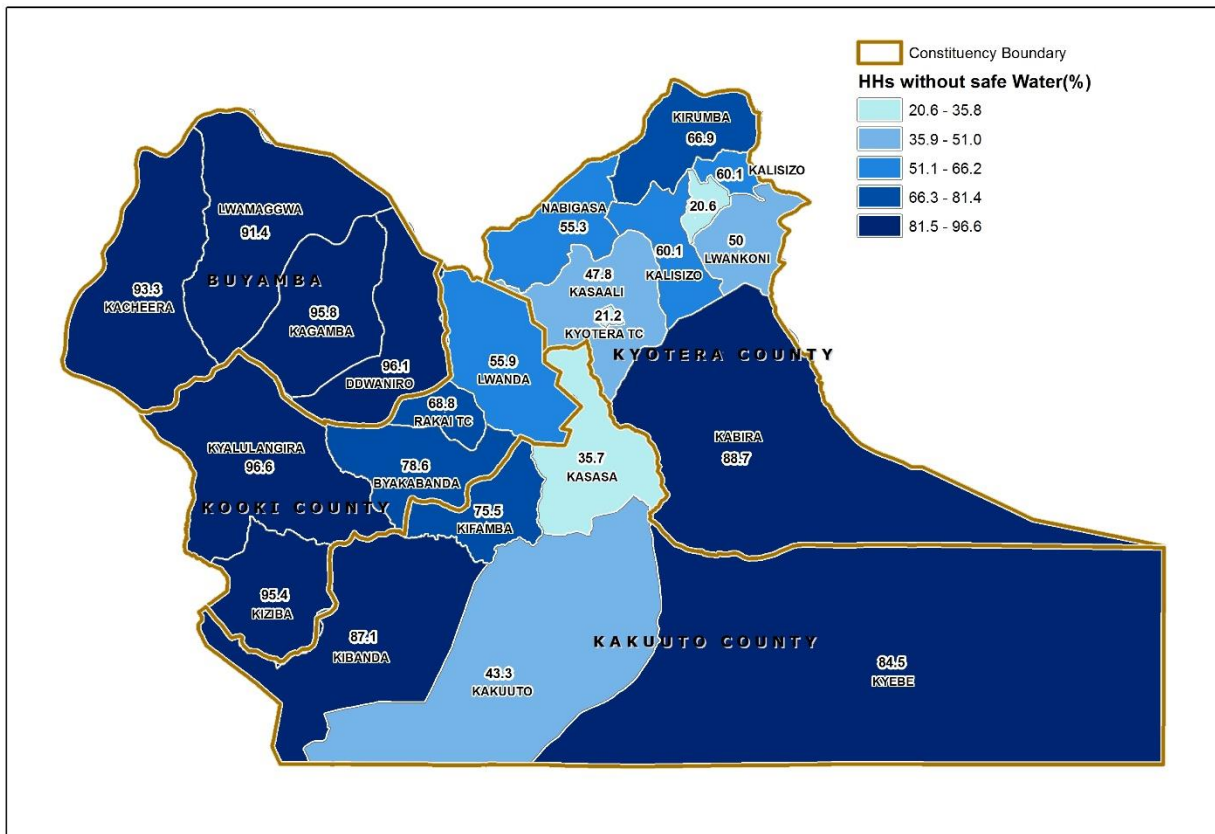
Map 7: Percentage Distribution of Orphans aged 0-17 Years; Rakai District, 2014



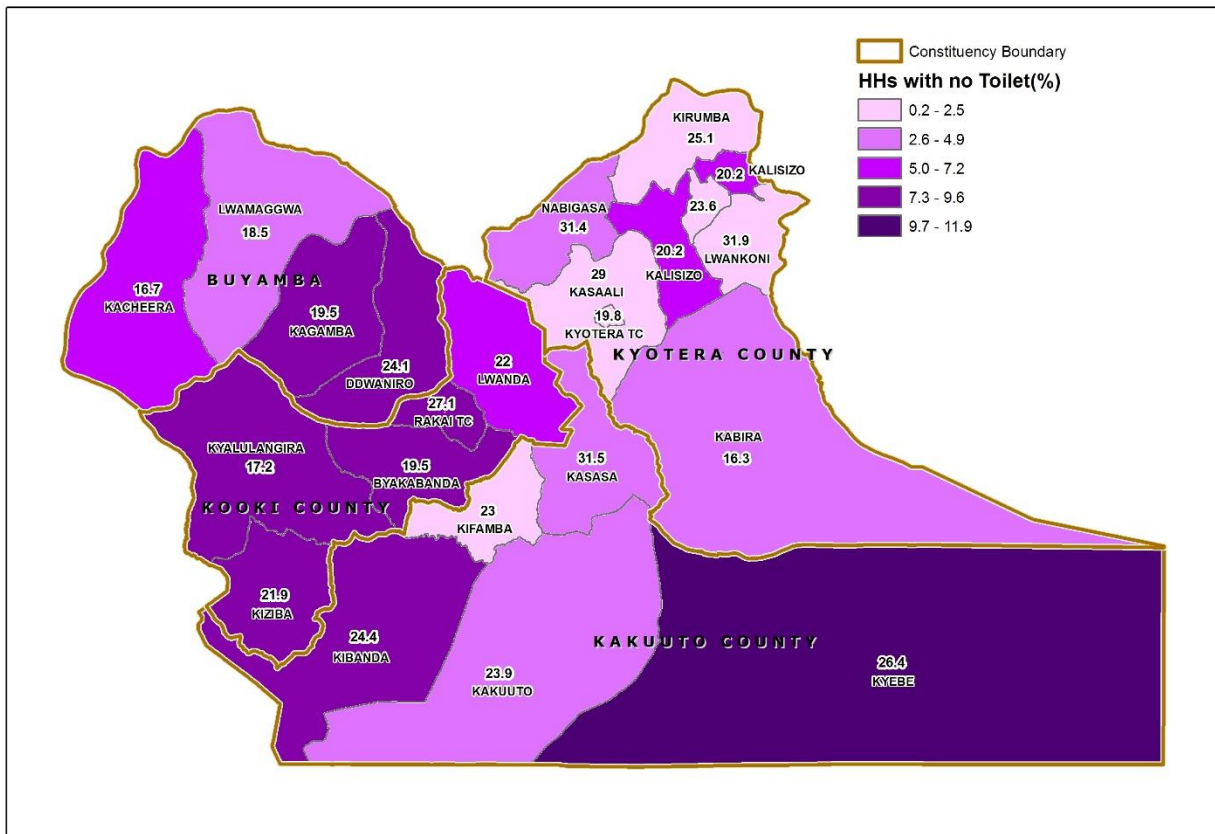
Map 8: Percentage Distribution of Households 5 Km and Over to the nearest Public Health Facility; Rakai District, 2014



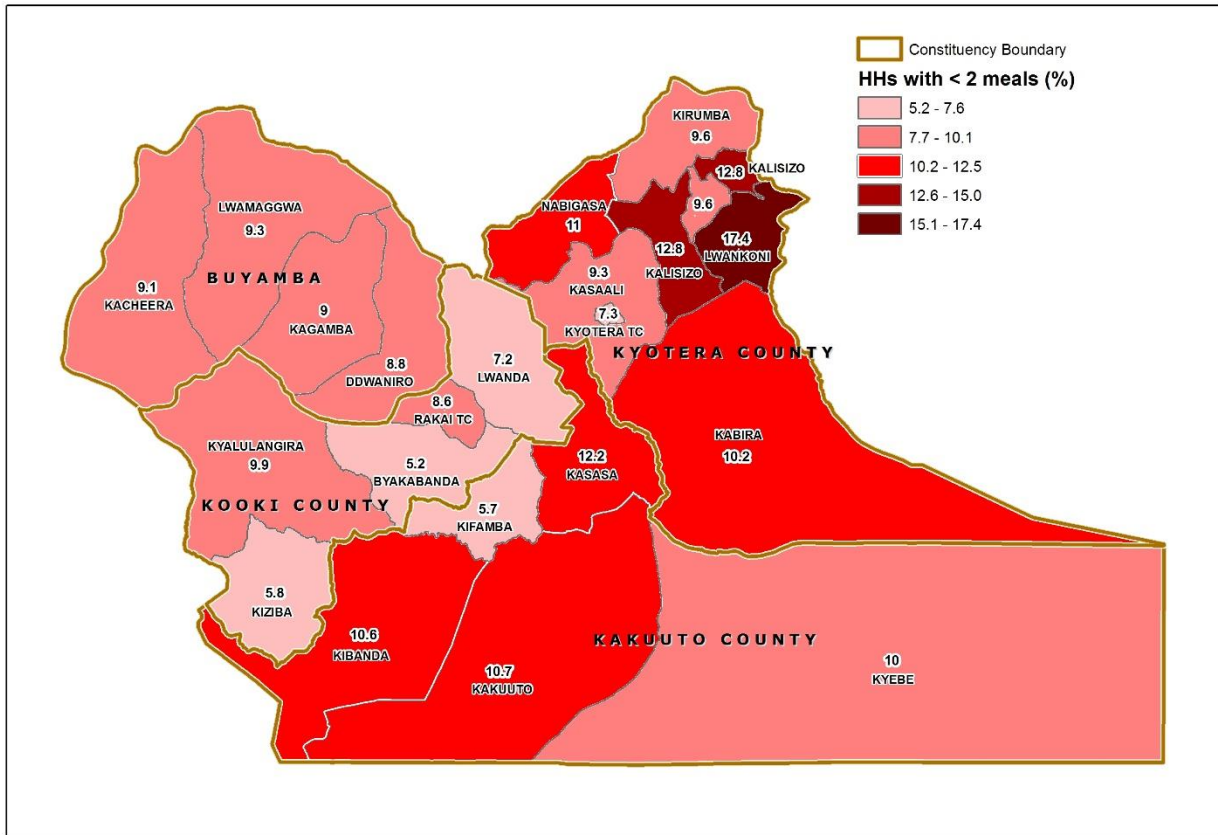
Map 9: Percentage Distribution of Households without access to Safe Water; Rakai District, 2014



Map 10: Percentage Distribution of Households with no Toilet facility; Rakai District, 2014



Map 11: Percentage Distribution of Households having less than 2 meals a day; Rakai District, 2014



AREA SPECIFIC PROFILES

RAKAI DISTRICT

LIST OF TABLES

- 1 Population
- 2 Education
- 3 Illiteracy status
- 4 Ownership of a Birth Certificate
- 5 Parental Survival and Orphanhood
- 6 Disability
- 7 Marriage and Child Bearing
- 8 Economic Activity and Employment
- 9 Use of ICT
- 10 Housing Conditions
- 11 Access to Community Services
- 12 Household Health and Hygiene
- 13 Household Assets
- 14 Other Household Characteristics
- 15 Household Based Agricultural Activities

1: POPULATION

1.1: Population Size	Number	Percent
Total population	516,309	
Total male population	254,366	49.3
Total female population	261,943	50.7
Sex ratio (males per 100 females)	97.1	
1.2: Households	Number	Percent
Total households	116,390	
Households headed by males	84,691	72.8
Households headed by females	31,699	27.2
Households headed by children (aged 10-17 years)	464	0.4
Households headed by youth (aged 18-30 years)	29,652	25.5
Households headed by older persons (aged 60 years and above)	19,968	17.2
1.3: Population by Age groups	Number	Percent
Population aged 0-17 years	289,590	56.9
Population aged 18-30 years	95,965	18.9
Population aged 31-59 years	98,401	19.4
Population aged 60 years and over	24,570	4.8
1.4: Population by Special Age groups	Number	Percent
Population aged Less than one Year	17,647	3.5
Population aged 0-4 Years	92,295	18.1
Population aged 0-8 Years	163,012	32.1
Population aged 2-8 Years	127,807	25.1
Population aged 2-17 Years	254,385	50
Population aged 6-12 Years	116,476	22.9
Population aged 6-15 Years	158,593	31.2
Population aged 10-15 Years	89,859	17.7
Population aged 10-17 Years	110,892	21.8
Population aged 15-24 Years	88,665	17.4
Population aged 16-64 Years	223,013	43.9
Population aged 15-29 Years	119,818	76.4
Population aged 2 Years and Over	473,321	93.1
Population aged 10 Years and Over	329,828	64.9
Population aged 15 Years and Over	251,395	49.4
Population aged 18 Years and Over	218,936	43.1
Population aged 20 Years and Over	200,584	39.4
Population aged 65 Years and over	16,956	3.3

2: EDUCATION

2.1: Non School attendance of	Number	Percent
Persons aged 6-15 years not attending school	18,660	11.8
Males aged 6-15 years not attending school	10,453	12.8
Females aged 6-15 years not attending school	8,207	10.7
2.2: Persons attending Primary school	Number	Percent
Persons aged 6-12 years attending primary school	94,613	81.2
Males aged 6-12 years attending primary school	47,993	80.1
Females aged 6-12 years attending primary school	46,620	82.4
2.3: Persons attending Secondary school	Number	Percent
Persons aged 13-18 years attending secondary school	2,261	27.5
Males aged 13-18 years attending secondary school	9,610	25.4
Females aged 13-18 years attending secondary school	10,651	29.7
2.4: Persons not in School and Highest Level Completed is below S.4	Number	Percent
Persons aged 15 years and above whose highest level of education completed is below S.4	161,422	87.4
Males aged 15 years and above whose highest level of education completed is below S.4	76,940	86.7
Females aged 15 years and above whose highest level of education completed is below S.4	84,482	88.1
2.5: Persons not in School and Highest Level Completed is "O" Level	Number	Percent
Persons aged 18 years and above whose highest level of education completed is "O" level (S.4)	11,508	5.3
Males aged 18 years and above whose highest level of education completed is "O" level (S.4)	5,536	5.5
Females aged 18 years and above whose highest level of education completed is "O" level (S.4)	5,972	5.0
2.6: Persons not in School and Highest Level Completed is "A" Level	Number	Percent
Persons aged 20 years and above whose highest level of education completed is "A" level (S.6)	2,365	1.2
Males aged 20 years and above whose highest level of education completed is "A" level (S.6)	1,542	1.7
Females aged 20 years and above whose highest level of education completed is "A" level (S.6)	823	0.8

3: ILLITERACY STATUS

	Number	Percent
3.1: Persons aged 18 years and above	60,324	27.6
Persons aged 18 years and above who are illiterate		
Males aged 18 years and above who are illiterate	23,057	23.0
Females aged 18 years and above who are illiterate	37,267	31.4
3.2: Other age groups	25,373	22.9
Persons aged 10-17 years who are illiterate		
Persons aged 18-30 years who are illiterate	16,474	17.2
Persons aged 60 years and above who are illiterate	13,686	55.7

4: OWNERSHIP OF A BIRTH CERTIFICATE

	Number	Percent
4.1: Children with birth certificates		
Children less than 1 year who have a birth certificate	3,264	18.5
Children less than 5 years who have a birth certificate	19,047	20.6
Children 0-8 years who have a birth certificate	33,444	20.5
Children 0-17 years who have a birth certificate	56,592	20.2

5: PARENTAL SURVIVAL AND ORPHANHOOD

	Number	Percent
5.1: Children 0-8 years		
Children 0-8 years who have lost one parent	6,394	3.9
Children 0-8 years who have lost both parents	593	0.4
Children 0-8 years who have lost at least a parent (total number of orphans)	6,987	4.3
Children 0-8 years who have both parents	156,025	95.7
5.2: All children (0-17 years)		
Children 0-17 years who have lost one parent	21,975	7.6
Children 0-17 years who have lost both parents	3,341	1.2
Children 0-17 years who have lost at least a parent (total number of orphans)	25,316	8.7
Children 0-17 years who have both parents	264,274	91.3

6: DISABILITY

6.1: Persons with a disability	Number	Percent
Persons aged 2 years and above with a disability	44,348	9.4
Persons aged 2 years and above with a seeing disability	23,162	4.9
Persons aged 2 years and above with a hearing disability	13,076	2.8
Persons aged 2 years and above with a walking disability	17,158	3.6
Persons aged 2 years and above with a remembering disability	18,456	3.9
Persons aged 2 years and above with multiple disabilities	14,463	34.2
Children aged 2-17 years with a disability	8,751	3.4
Youth aged 18-30 years with a disability	5,684	5.9
Older persons aged 60 years and above with a disability	13,482	54.9

7: MARRIAGE AND CHILDBEARING

7.1: Marital status of the population	Number	Percent
Persons aged 10 years and above who are married	79,849	46.2
Persons aged 18 years and above who are married	76,787	64.6
Females aged 50 years and above who are widowed	11,422	45.6
Females aged 10-17 years who have ever been married	3,362	6.2
Females aged 10-19 years who have ever been married	8,261	13.0
7.2: Females who have had a birth	Number	Percent
Females aged 12-17 years who have given birth	3,466	9.0
Females aged 12-19 years who have given birth	7,449	15.5

8: ECONOMIC ACTIVITY AND EMPLOYMENT

8.1: Working persons	Number	Percent
Persons aged 10-15 years who were working	33,314	37.1
Persons aged 10-17 years who were working	45,037	40.6
Persons aged 18-30 years who were working	82,451	85.9
Persons aged 16-64 years who were working	194,850	87.4
Persons aged 18 years and above who were working	195,381	89.2
Persons aged 60 years and above who were working	19,194	78.1
8.2: Youths Not working and not in school		
Youths (Persons aged 18-30 years) who were neither working nor in school	5,904	6.2

9: USE OF ICT

9.1: Mobile phone ownership (10 years and above)		
	Number	Percent
Persons aged 10 years that own at least one mobile phone	134,470	40.8
Males aged 10 years and above that own at least one mobile phone	71,148	45.3
Females aged 10 years and above that own at least one mobile phone	63,322	36.7
9.2: Mobile phone ownership (18-30 years)		
	Number	Percent
Persons aged 18-30 years and above that own at least one mobile phone	53,133	55.4
Males aged 18-30 years and above that own at least one mobile phone	28,143	65.1
Females aged 18-30 years and above that own at least one mobile phone	24,990	47.4
9.3: Internet Usage (10 years and above)		
	Number	Percent
Persons aged 10 years and above that use internet	14,055	4.26
Males aged 10 years and above that use internet	8,527	5.43
Females aged 10 years and above that use internet	5,528	3.2
9.4: Internet Usage (18-30 years)		
	Number	Percent
Persons aged 18-30 years that use internet	7,055	7.4
Males aged 18-30 years that use internet	4,234	9.8
Females aged 18-30 years that use internet	2,821	5.4

10: HOUSING CONDITIONS

10.1: Construction Materials For the Dwelling Units		
	Number	Percent
Households living in dwelling units constructed using permanent roof materials	106,912	91.9
Households living in dwelling units constructed using permanent wall materials	67,930	58.4
Households living in dwelling units constructed using permanent floor materials	42,538	36.5
10.2: Status of Dwelling Units		
	Number	Percent
Households living in semi-permanent dwelling units	68,503	58.9
Households living in temporary dwelling units	8,878	7.6

11: ACCESS TO COMMUNITY SERVICES

11.1: Access to a Primary school	Number	Percent
Households that are 5 km or more to the nearest primary school, <u>whether public or private</u>	11,337	9.7
Households that are 5 km or more to the nearest <u>public</u> primary school	17,579	15.1
11.2: Access to a Secondary school	Number	Percent
Households that are 5 km or more to the nearest secondary school, <u>whether public or private</u>	46,410	39.9
Households that are 5 km or more to the nearest <u>public</u> secondary school	60,775	52.2
11.3: Access to a Health Facility	Number	Percent
Households that are 5 km or more to the nearest health facility, <u>whether public or private</u>	22,041	18.9
Households that are 5 km or more to the nearest <u>public</u> health facility	33,753	29.0
11.4: Access to a Police post /Police station	Number	Percent
Households that are 5 km or more to the nearest Police Post/Police Station	37,140	31.9

12: HOUSEHOLD HEALTH AND HYGIENE

12.1:Ownership of Mosquito nets	Number	Percent
Households that own at least a mosquito net	108,595	93.3
Households that own at least a mosquito net that was received free (Government /NGO)	104,699	96.4
12.2: Source Of Water For Drinking	Number	Percent
Households that have access to piped water	11,072	9.5
Households that use a bore hole	12,866	11.1
12.3:Ownership of a Toilet facility	Number	Percent
Households without any toilet facility	5,263	4.5
12.4: Other environmental conditions	Number	Percent
Households that <u>properly</u> dispose off solid waste	30,174	25.9
Households which are not living in decent dwellings	113,726	97.7

13: HOUSEHOLD ASSETS

13.1: Owner occupied Dwellings	Number	Percent
Households that are owner occupied	86,466	74.3
Male headed households that are owner occupied	63,766	73.7
Female headed households that are owner occupied	22,700	26.3
13.2: Movable Assets	Number	Percent
Households that own a television	9,814	8.4
Households that own a computer	1,968	1.7
Households that own a bicycle	39,499	33.9
Households that own a radio	80,692	69.3

14: OTHER HOUSEHOLD CHARACTERISTICS

14.1: Main source of information	Number	Percent
Households whose main source of information is a radio	80,907	69.5
Households whose main source of information is a community announcer	7,249	6.2
Households whose main source of information is a telephone	4,849	4.2
14.2: Household Economy and Welfare	Number	Percent
Households that received remittances from abroad in the last 12 months	23,109	19.9
Households where any member possesses a bank account	21,422	18.4
Households that depend on subsistence farming as a main source of livelihood	85,439	73.4
Households with at least one member engaged in a non-agricultural household based enterprise	51,551	88.2
Households where (members aged 5 years and above) consume less than two meals in a day	11,078	9.5
14.3: Source of Energy for lighting	Number	Percent
Households that have access to electricity	17,095	14.7
Households that use tadooba for lighting	79,813	68.6

15: HOUSEHOLD BASED AGRICULTURAL ACTIVITIES

15.1: Household based Agriculture activities	Number	Percent
Households engaged in crop growing	100,689	86.5
Households engaged in maize growing	85,055	73.1
Households engaged in coffee growing	17,911	15.4
Households engaged in growing of beans	88,554	76.1
Households engaged in growing of millet	2,818	2.4
Households engaged in growing of sweet potatoes	21,906	18.8
Households engaged in growing of matooke	45,451	39.1
Households engaged livestock farming	74,628	64.1
Households engaged in either crop growing or livestock farming	104,216	89.5

KAKUUTO COUNTY CONSTITUENCY

LIST OF TABLES

- 1 Population
- 2 Education
- 3 Illiteracy status
- 4 Ownership of a Birth Certificate
- 5 Parental Survival and Orphanhood
- 6 Disability
- 7 Marriage and Child Bearing
- 8 Economic Activity and Employment
- 9 Use of ICT
- 10 Housing Conditions
- 11 Access to Community Services
- 12 Household Health and Hygiene
- 13 Household Assets
- 14 Other Household Characteristics
- 15 Household Based Agricultural Activities

1: POPULATION

1.1: Population Size	Number	Percent
Total population	116,132	
Total male population	58,198	50.1
Total female population	57,934	49.9
Sex ratio (males per 100 females)	100.5	
1.2: Households	Number	Percent
Total households	26,796	
Households headed by males	19,326	72.1
Households headed by females	7,470	27.9
Households headed by children (aged 10-17 years)	142	0.5
Households headed by youth (aged 18-30 years)	6,818	25.4
Households headed by older persons (aged 60 years and above)	4,315	16.1
1.3: Population by Age groups	Number	Percent
Population aged 0-17 years	63,428	55.8
Population aged 18-30 years	21,732	19.1
Population aged 31-59 years	23,040	20.3
Population aged 60 years and over	5,524	4.9
1.4: Population by Special Age groups	Number	Percent
Population aged Less than one Year	3,821	3.4
Population aged 0-4 Years	20,166	17.7
Population aged 0-8 Years	35,756	31.4
Population aged 2-8 Years	28,061	24.7
Population aged 2-17 Years	55,733	49.0
Population aged 6-12 Years	25,757	22.6
Population aged 6-15 Years	34,955	30.7
Population aged 10-15 Years	19,671	17.3
Population aged 10-17 Years	24,126	21.2
Population aged 15-24 Years	19,341	17.0
Population aged 16-64 Years	50,870	44.7
Population aged 15-29 Years	26,605	23.4
Population aged 2 Years and Over	106,029	93.2
Population aged 10 Years and Over	74,422	65.4
Population aged 15 Years and Over	57,196	50.3
Population aged 18 Years and Over	50,296	44.2
Population aged 20 Years and Over	46,257	40.7
Population aged 65 Years and over	3,881	3.4

2: EDUCATION

2.1: Non School attendance of	Number	Percent
Persons aged 6-15 years not attending school	5,176	14.8
Males aged 6-15 years not attending school	2,920	16.1
Females aged 6-15 years not attending school	2,256	13.4
2.2: Persons attending Primary school	Number	Percent
Persons aged 6-12 years attending primary school	20,093	78.0
Males aged 6-12 years attending primary school	10,234	76.5
Females aged 6-12 years attending primary school	9,859	79.6
2.3: Persons attending Secondary school	Number	Percent
Persons aged 13-18 years attending secondary school	4,324	27.2
Males aged 13-18 years attending secondary school	2,111	25.5
Females aged 13-18 years attending secondary school	2,213	28.9
2.4: Persons not in School and Highest Level Completed is below S.4	Number	Percent
Persons aged 15 years and above whose highest level of education completed is below S.4	35,864	88.5
Males aged 15 years and above whose highest level of education completed is below S.4	17,392	87.6
Females aged 15 years and above whose highest level of education completed is below S.4	18,472	89.4
2.5: Persons not in School and Highest Level Completed is "O" Level	Number	Percent
Persons aged 18 years and above whose highest level of education completed is "O" level (S.4)	2,411	4.8
Males aged 18 years and above whose highest level of education completed is "O" level (S.4)	1,196	5.1
Females aged 18 years and above whose highest level of education completed is "O" level (S.4)	1,215	4.6
2.6: Persons not in School and Highest Level Completed is "A" Level	Number	Percent
Persons aged 20 years and above whose highest level of education completed is "A" level (S.6)	555	1.2
Males aged 20 years and above whose highest level of education completed is "A" level (S.6)	386	1.8
Females aged 20 years and above whose highest level of education completed is "A" level (S.6)	169	0.7

3: ILLITERACY STATUS

3.1: Persons aged 18 years and above	Number	Percent
Persons aged 18 years and above who are illiterate	15,355	30.5
Males aged 18 years and above who are illiterate	6,314	26.7
Females aged 18 years and above who are illiterate	9,041	34.0
3.2: Other age groups	Number	Percent
Persons aged 10-17 years who are illiterate	6,050	25.1
Persons aged 18-30 years who are illiterate	4,429	20.4
Persons aged 60 years and above who are illiterate	3,261	59.0

4: OWNERSHIP OF A BIRTH CERTIFICATE

4.1: Children with birth certificates	Number	Percent
Children less than 1 year who have a birth certificate	644	16.9
Children less than 5 years who have a birth certificate	3,873	19.2
Children 0-8 years who have a birth certificate	6,793	19.0
Children 0-17 years who have a birth certificate	11,591	18.9

5: PARENTAL SURVIVAL AND ORPHANHOOD

5.1: Children 0-8 years	Number	Percent
Children 0-8 years who have lost one parent	1,606	4.5
Children 0-8 years who have lost both parents	139	0.4
Children 0-8 years who have lost at least a parent (total number of orphans)	1,745	4.9
Children 0-8 years who have both parents	34,011	95.1
5.2: All children (0-17 years)	Number	Percent
Children 0-17 years who have lost one parent	5,216	8.2
Children 0-17 years who have lost both parents	744	1.2
Children 0-17 years who have lost at least a parent (total number of orphans)	5,960	9.4
Children 0-17 years who have both parents	57,468	90.6

6: DISABILITY

6.1: Persons with a disability	Number	Percent
Persons aged 2 years and above with a disability	10,634	10.0
Persons aged 2 years and above with a seeing disability	5,401	5.1
Persons aged 2 years and above with a hearing disability	3,155	3.0
Persons aged 2 years and above with a walking disability	4,052	3.8
Persons aged 2 years and above with a remembering disability	4,656	4.4
Persons aged 2 years and above with multiple disabilities	3,447	33.8
Children aged 2-17 years with a disability	2,188	3.9
Youth aged 18-30 years with a disability	1,366	6.3
Older persons aged 60 years and above with a disability	3,125	56.6

7: MARRIAGE AND CHILDBEARING

7.1: Marital status of the population	Number	Percent
Persons aged 10 years and above who are married	17,690	46.2
Persons aged 18 years and above who are married	17,036	64.0
Females aged 50 years and above who are widowed	2,393	44.9
Females aged 10-17 years who have ever been married	711	6.1
Females aged 10-19 years who have ever been married	1,719	12.5
7.2: Females who have had a birth	Number	Percent
Females aged 12-17 years who have given birth	859	10.4
Females aged 12-19 years who have given birth	1,699	16.4

8: ECONOMIC ACTIVITY AND EMPLOYMENT

8.1: Working persons	Number	Percent
Persons aged 10-15 years who were working	9,195	46.7
Persons aged 10-17 years who were working	11,844	49.1
Persons aged 18-30 years who were working	18,484	85.1
Persons aged 16-64 years who were working	44,290	87.1
Persons aged 18 years and above who were working	44,525	88.5
Persons aged 60 years and above who were working	4,375	79.2
8.2: Youths Not working and not in school		
Youths (Persons aged 18-30 years) who were neither working nor in school	1,541	7.1

9: USE OF ICT

9.1: Mobile phone ownership (10 years and above)		
	Number	Percent
Persons aged 10 years that own at least one mobile phone	31,856	42.8
Males aged 10 years and above that own at least one mobile phone	16,928	46.8
Females aged 10 years and above that own at least one mobile phone	14,928	39.0
9.2: Mobile phone ownership (18-30 years)		
	Number	Percent
Persons aged 18-30 years and above that own at least one mobile phone	12,450	57.3
Males aged 18-30 years and above that own at least one mobile phone	6,470	65.8
Females aged 18-30 years and above that own at least one mobile phone	5,980	50.3
9.3: Internet Usage (10 years and above)		
	Number	Percent
Persons aged 10 years and above that use internet	3,595	4.83
Males aged 10 years and above that use internet	2,142	5.92
Females aged 10 years and above that use internet	1453	3.80
9.4: Internet Usage (18-30 years)		
	Number	Percent
Persons aged 18-30 years that use internet	1,678	7.7
Males aged 18-30 years that use internet	1,005	10.2
Females aged 18-30 years that use internet	673	5.7

10: HOUSING CONDITIONS

10.1: Construction Materials For the Dwelling Units	Number	Percent
Households living in dwelling units constructed using permanent roof materials	22,782	85.0
Households living in dwelling units constructed using permanent wall materials	14,559	54.3
Households living in dwelling units constructed using permanent floor materials	10,396	38.8
10.2: Status of Dwelling Units	Number	Percent
Households living in semi-permanent dwelling units	13,771	51.4
Households living in temporary dwelling units	3,732	13.9

11: ACCESS TO COMMUNITY SERVICES

11.1: Access to a Primary school	Number	Percent
Households that are 5 km or more to the nearest primary school, <u>whether public or private</u>	3,815	14.2
Households that are 5 km or more to the nearest <u>public</u> primary school	5,871	21.9
11.2: Access to a Secondary school	Number	Percent
Households that are 5 km or more to the nearest secondary school, <u>whether public or private</u>	13,189	49.2
Households that are 5 km or more to the nearest <u>public</u> secondary school	16,225	60.6
11.3: Access to a Health Facility	Number	Percent
Households that are 5 km or more to the nearest health facility, <u>whether public or private</u>	6,782	25.3
Households that are 5 km or more to the nearest <u>public</u> health facility	11,023	41.1
11.4: Access to a Police post /Police station	Number	Percent
Households that are 5 km or more to the nearest Police Post/Police Station	7,953	29.7

12: HOUSEHOLD HEALTH AND HYGIENE

12.1: Ownership of Mosquito nets	Number	Percent
Households that own at least a mosquito net	24,573	91.7
Households that own at least a mosquito net that was received free (Government /NGO)	23,623	96.1
12.2: Source Of Water For Drinking	Number	Percent
Households that have access to piped water	2,769	10.3
Households that use a bore hole	5,030	18.8
12.3: Ownership of a Toilet facility	Number	Percent
Households without any toilet facility	1,415	5.3
12.4: Other environmental conditions	Number	Percent
Households that <u>properly</u> dispose off solid waste	9,103	34.0
Households which are not living in decent dwellings	26,282	98.1

13: HOUSEHOLD ASSETS

13.1: Owner occupied Dwellings	Number	Percent
Households that are owner occupied	18,915	70.6
Male headed households that are owner occupied	13,879	73.4
Female headed households that are owner occupied	5,036	26.6
13.2: Movable Assets	Number	Percent
Households that own a television	2,565	9.6
Households that own a computer	449	1.7
Households that own a bicycle	9,609	35.9
Households that own a radio	17,509	65.3

14: OTHER HOUSEHOLD CHARACTERISTICS

14.1: Main source of information	Number	Percent
Households whose main source of information is a radio	18,186	67.9
Households whose main source of information is a community announcer	2,038	7.6
Households whose main source of information is a telephone	1,014	3.8
14.2: Household Economy and Welfare	Number	Percent
Households that received remittances from abroad in the last 12 months	5,388	20.1
Households where any member possesses a bank account	5,054	18.9
Households that depend on subsistence farming as a main source of livelihood	18,342	68.5
Households with at least one member engaged in a non-agricultural household based enterprise	11,373	87.1
Households where (members aged 5 years and above) consume less than two meals in a day	2,720	10.2
14.3: Source of Energy for lighting	Number	Percent
Households that have access to electricity	3,962	14.8
Households that use tadooba for lighting	17,666	65.9

15: HOUSEHOLD BASED AGRICULTURAL ACTIVITIES

15.1: Household based Agriculture activities	Number	Percent
Households engaged in crop growing	21,099	78.7
Households engaged in maize growing	17,350	64.7
Households engaged in coffee growing	4,830	18.0
Households engaged in growing of beans	17,921	66.9
Households engaged in growing of millet	521	1.9
Households engaged in growing of sweet potatoes	5,912	22.1
Households engaged in growing of matooke	10,475	39.1
Households engaged livestock farming	16,625	62.0
Households engaged in either crop growing or livestock farming	22,482	83.9

KOOKI COUNTY CONSTITUENCY

LIST OF TABLES

- 1 Population
- 2 Education
- 3 Illiteracy status
- 4 Ownership of a Birth Certificate
- 5 Parental Survival and Orphanhood
- 6 Disability
- 7 Marriage and Child Bearing
- 8 Economic Activity and Employment
- 9 Use of ICT
- 10 Housing Conditions
- 11 Access to Community Services
- 12 Household Health and Hygiene
- 13 Household Assets
- 14 Other Household Characteristics
- 15 Household Based Agricultural Activities

1: POPULATION

1.1: Population Size	Number	Percent
Total population	103,106	
Total male population	50,744	49.2
Total female population	52,362	50.8
Sex ratio (males per 100 females)	96.9	
1.2: Households	Number	Percent
Total households	22,092	
Households headed by males	16,933	76.6
Households headed by females	5,159	23.4
Households headed by children (aged 10-17 years)	55	0.2
Households headed by youth (aged 18-30 years)	5,805	26.3
Households headed by older persons (aged 60 years and above)	3,604	16.3
1.3: Population by Age groups	Number	Percent
Population aged 0-17 years	58,815	57.8
Population aged 18-30 years	19,392	19.0
Population aged 60 years and over	4,359	4.3
1.4: Population by Special Age groups	Number	Percent
Population aged Less than one Year	3,802	3.7
Population aged 0-4 Years	19,457	19.1
Population aged 0-8 Years	33,797	33.2
Population aged 2-8 Years	26,329	25.9
Population aged 2-17 Years	51,347	50.4
Population aged 6-12 Years	23,611	23.2
Population aged 6-15 Years	31,837	31.3
Population aged 10-15 Years	17,911	17.6
Population aged 10-17 Years	21,881	21.5
Population aged 15-24 Years	17,466	17.2
Population aged 16-64 Years	44,048	43.3
Population aged 15-29 Years	23,816	23.4
Population aged 2 Years and Over	94,346	92.7
Population aged 10 Years and Over	64,880	63.7
Population aged 15 Years and Over	49,180	48.3
Population aged 18 Years and Over	42,999	42.2
Population aged 20 Years and Over	39,361	38.7
Population aged 65 Years and over	2,921	2.9

2: EDUCATION

	Number	Percent
2.1: Non School attendance of		
Persons aged 6-15 years not attending school	4,221	13.3
Males aged 6-15 years not attending school	2,314	14.3
Females aged 6-15 years not attending school	1,907	12.2
2.2: Persons attending Primary school		
Persons aged 6-12 years attending primary school	18,886	80.0
Males aged 6-12 years attending primary school	4,725	78.7
Females aged 6-12 years attending primary school	2,544	81.3
2.3: Persons attending Secondary school		
Persons aged 13-18 years attending secondary school	2,181	23.4
Males aged 13-18 years attending secondary school	10,913	22.6
Females aged 13-18 years attending secondary school	5,632	24.3
2.4: Persons not in School and Highest Level Completed is below S.4		
Persons aged 15 years and above whose highest level of education completed is below S.4	31,884	89.5
Males aged 15 years and above whose highest level of education completed is below S.4	15,442	88.4
Females aged 15 years and above whose highest level of education completed is below S.4	16,442	90.5
2.5: Persons not in School and Highest Level Completed is "O" Level		
Persons aged 18 years and above whose highest level of education completed is "O" level (S.4)	1,889	4.4
Males aged 18 years and above whose highest level of education completed is "O" level (S.4)	973	4.9
Females aged 18 years and above whose highest level of education completed is "O" level (S.4)	916	4.0
2.6: Persons not in School and Highest Level Completed is "A" Level		
Persons aged 20 years and above whose highest level of education completed is "A" level (S.6)	305	0.8
Males aged 20 years and above whose highest level of education completed is "A" level (S.6)	200	1.1
Females aged 20 years and above whose highest level of education completed is "A" level (S.6)	105	0.5

3: ILLITERACY STATUS

3.1: Persons aged 18 years and above	Number	Percent
	12,590	29.3
Persons aged 18 years and above who are illiterate	4,634	23.3
Males aged 18 years and above who are illiterate	7,956	34.4
Females aged 18 years and above who are illiterate		
3.2: Other age groups	Number	Percent
	5,298	24.2
Persons aged 10-17 years who are illiterate	3,632	18.7
Persons aged 18-30 years who are illiterate	2,545	58.4
Persons aged 60 years and above who are illiterate		

4: OWNERSHIP OF A BIRTH CERTIFICATE

4.1: Children with birth certificates	Number	Percent
	795	20.9
Children less than 1 year who have a birth certificate	5,081	26.1
Children less than 5 years who have a birth certificate	8,996	26.6
Children 0-8 years who have a birth certificate	15,226	26.7
Children 0-17 years who have a birth certificate		

5: PARENTAL SURVIVAL AND ORPHANHOOD

5.1: Children 0-8 years	Number	Percent
Children 0-8 years who have lost one parent	1,146	3.4
Children 0-8 years who have lost both parents	109	0.3
Children 0-8 years who have lost at least a parent (total number of orphans)	1,255	3.7
Children 0-8 years who have both parents	32,542	96.3
5.2: All children (0-17 years)	Number	Percent
Children 0-17 years who have lost one parent	3,946	6.7
Children 0-17 years who have lost both parents	526	0.9
Children 0-17 years who have lost at least a parent (total number of orphans)	4,472	7.6
Children 0-17 years who have both parents	54,343	92.4

6: DISABILITY

6.1: Persons with a disability	Number	Percent
Persons aged 2 years and above with a disability	8,299	8.8
Persons aged 2 years and above with a seeing disability	4,091	4.3
Persons aged 2 years and above with a hearing disability	2,409	2.6
Persons aged 2 years and above with a walking disability	3,043	3.2
Persons aged 2 years and above with a remembering disability	3,444	3.7
Persons aged 2 years and above with multiple disabilities	2,539	31.9
Children aged 2-17 years with a disability	1,815	3.5
Youth aged 18-30 years with a disability	1,124	5.8
Older persons aged 60 years and above with a disability	2,295	52.6

7: MARRIAGE AND CHILDBEARING

7.1: Marital status of the population	Number	Percent
Persons aged 10 years and above who are married	16,932	50.1
Persons aged 18 years and above who are married	16,186	69.9
Females aged 50 years and above who are widowed	1,998	44.2
Females aged 10-17 years who have ever been married	801	7.5
Females aged 10-19 years who have ever been married	1,937	15.4
7.2: Females who have had a birth	Number	Percent
Females aged 12-17 years who have given birth	676	9.0
Females aged 12-19 years who have given birth	1,512	16.0

8: ECONOMIC ACTIVITY AND EMPLOYMENT

8.1: Working persons	Number	Percent
Persons aged 10-15 years who were working	5,427	30.3
Persons aged 10-17 years who were working	7,577	34.6
Persons aged 18-30 years who were working	16,928	87.3
Persons aged 16-64 years who were working	38,844	88.2
Persons aged 18 years and above who were working	38,845	90.3
Persons aged 60 years and above who were working	3,456	79.3
8.2: Youths Not working and not in school		
Youths (Persons aged 18-30 years) who were neither working nor in school	912	4.7

9: USE OF ICT

	Number	Percent
9.1: Mobile phone ownership (10 years and above)		
Persons aged 10 years that own at least one mobile phone	23,563	36.3
Males aged 10 years and above that own at least one mobile phone	13,287	42.8
Females aged 10 years and above that own at least one mobile phone	10,276	30.4
9.2: Mobile phone ownership (18-30 years)		
Persons aged 18-30 years and above that own at least one mobile phone	9,516	49.1
Males aged 18-30 years and above that own at least one mobile phone	5,433	61.9
Females aged 18-30 years and above that own at least one mobile phone	4,083	38.4
9.3: Internet Usage (10 years and above)		
Persons aged 10 years and above that use internet	1,993	3.07
Males aged 10 years and above that use internet	1,234	3.97
Females aged 10 years and above that use internet	759	2.24
9.4: Internet Usage (18-30 years)		
Persons aged 18-30 years that use internet	1,001	5.2
Males aged 18-30 years that use internet	641	7.3
Females aged 18-30 years that use internet	360	3.4

10: HOUSING CONDITIONS

	Number	Percent
10.1: Construction Materials For the Dwelling Units		
Households living in dwelling units constructed using permanent roof materials	20,123	91.1
Households living in dwelling units constructed using permanent wall materials	9,973	45.1
Households living in dwelling units constructed using permanent floor materials	5,424	24.6
10.2: Status of Dwelling Units		
Households living in semi-permanent dwelling units	15,355	69.5
Households living in temporary dwelling units	1,859	8.4

11: ACCESS TO COMMUNITY SERVICES

11.1: Access to a Primary school	Number	Percent
Households that are 5 km or more to the nearest primary school, <u>whether public or private</u>	2,771	12.5
Households that are 5 km or more to the nearest <u>public</u> primary school	4,203	19.0
11.2: Access to a Secondary school	Number	Percent
Households that are 5 km or more to the nearest secondary school, <u>whether public or private</u>	8,817	39.9
Households that are 5 km or more to the nearest <u>public</u> secondary school	11,234	50.9
11.3: Access to a Health Facility	Number	Percent
Households that are 5 km or more to the nearest health facility, <u>whether public or private</u>	5,107	23.1
Households that are 5 km or more to the nearest <u>public</u> health facility	7,515	34.0
11.4: Access to a Police post /Police station	Number	Percent
Households that are 5 km or more to the nearest Police Post/Police Station	9,088	41.1

12: HOUSEHOLD HEALTH AND HYGIENE

12.1:Ownership of Mosquito nets	Number	Percent
Households that own at least a mosquito net	20,966	94.9
Households that own at least a mosquito net that was received free (Government /NGO)	20,547	98.0
12.2: Source Of Water For Drinking	Number	Percent
Households that have access to piped water	1,415	6.4
Households that use a bore hole	2,005	9.1
12.3:Ownership of a Toilet facility	Number	Percent
Households without any toilet facility	1,532	6.9
12.4: Other environmental conditions	Number	Percent
Households that <u>properly</u> dispose off solid waste	4,448	20.1
Households which are not living in decent dwellings	21,784	98.6

13: HOUSEHOLD ASSETS

13.1: Owner occupied Dwellings	Number	Percent
Households that are owner occupied	17,655	79.9
Male headed households that are owner occupied	13,729	77.8
Female headed households that are owner occupied	3,926	22.2
13.2: Movable Assets	Number	Percent
Households that own a television	1,016	4.6
Households that own a computer	282	1.3
Households that own a bicycle	7,193	32.6
Households that own a radio	15,269	69.1

14: OTHER HOUSEHOLD CHARACTERISTICS

14.1: Main source of information	Number	Percent
Households whose main source of information is a radio	15,432	69.9
Households whose main source of information is a community announcer	1,116	5.1
Households whose main source of information is a telephone	907	4.1
14.2: Household Economy and Welfare	Number	Percent
Households that received remittances from abroad in the last 12 months	4,374	19.8
Households where any member possesses a bank account	3,649	16.5
Households that depend on subsistence farming as a main source of livelihood	18,350	83.1
Households with at least one member engaged in a non-agricultural household based enterprise	9,623	89.4
Households where (members aged 5 years and above) consume less than two meals in a day	1,637	7.4
14.3: Source of Energy for lighting	Number	Percent
Households that have access to electricity	2,316	10.5
Households that use tadooba for lighting	16,402	74.2

15: HOUSEHOLD BASED AGRICULTURAL ACTIVITIES

15.1: Household based Agriculture activities	Number	Percent
Households engaged in crop growing	20,580	93.2
Households engaged in maize growing	16,196	73.3
Households engaged in coffee growing	1,655	7.5
Households engaged in growing of beans	18,055	81.7
Households engaged in growing of millet	570	2.6
Households engaged in growing of sweet potatoes	1,868	8.5
Households engaged in growing of matooke	9,425	42.7
Households engaged livestock farming	14,488	65.6
Households engaged in either crop growing or livestock farming	20,935	94.8

KYOTERA COUNTY CONSTITUENCY

LIST OF TABLES

- 1 Population
- 2 Education
- 3 Illiteracy status
- 4 Ownership of a Birth Certificate
- 5 Parental Survival and Orphanhood
- 6 Disability
- 7 Marriage and Child Bearing
- 8 Economic Activity and Employment
- 9 Use of ICT
- 10 Housing Conditions
- 11 Access to Community Services
- 12 Household Health and Hygiene
- 13 Household Assets
- 14 Other Household Characteristics
- 15 Household Based Agricultural Activities

1: POPULATION

1.1: Population Size	Number	Percent
Total population	162,528	
Total male population	79,602	49.0
Total female population	82,926	51.0
Sex ratio (males per 100 females)	96.0	
1.2: Households	Number	Percent
Total households	38,667	
Households headed by males	26,573	68.7
Households headed by females	12,094	31.3
Households headed by children (aged 10-17 years)	176	0.5
Households headed by youth (aged 18-30 years)	9,933	25.7
Households headed by older persons (aged 60 years and above)	7,229	18.7
1.3: Population by Age groups	Number	Percent
Population aged 0-17 years	88,590	55.6
Population aged 18-30 years	30,912	19.4
Population aged 31-59 years	30,886	19.4
Population aged 60 years and over	8,847	5.6
1.4: Population by Special Age groups	Number	Percent
Population aged Less than one Year	4,951	3.1
Population aged 0-4 Years	26,776	16.8
Population aged 0-8 Years	48,162	30.2
Population aged 2-8 Years	38,115	23.9
Population aged 2-17 Years	78,543	49.3
Population aged 6-12 Years	35,755	22.5
Population aged 6-15 Years	49,234	30.9
Population aged 10-15 Years	28,321	17.8
Population aged 10-17 Years	35,575	22.3
Population aged 15-24 Years	29,192	18.3
Population aged 16-64 Years	71,604	45.0
Population aged 15-29 Years	39,192	24.61
Population aged 2 Years and Over	149,188	93.7
Population aged 10 Years and Over	106,220	66.7
Population aged 15 Years and Over	81,671	51.3
Population aged 18 Years and Over	70,645	44.4
Population aged 20 Years and Over	64,598	40.6
Population aged 65 Years and over	6,295	4.0

2: EDUCATION

	Number	Percent
2.1: Non School attendance of		
Persons aged 6-15 years not attending school	4,350	8.8
Males aged 6-15 years not attending school	2,567	10.1
Females aged 6-15 years not attending school	1,783	7.5
2.2: Persons attending Primary school	Number	Percent
Persons aged 6-12 years attending primary school	30,116	84.2
Males aged 6-12 years attending primary school	15,467	83.2
Females aged 6-12 years attending primary school	14,646	85.4
2.3: Persons attending Secondary school	Number	Percent
Persons aged 13-18 years attending secondary school	8,470	34.9
Males aged 13-18 years attending secondary school	3,769	30.3
Females aged 13-18 years attending secondary school	4,701	39.6
2.4: Persons not in School and Highest Level Completed is below S.4	Number	Percent
Persons aged 15 years and above whose highest level of education completed is below S.4	52,769	82.1
Males aged 15 years and above whose highest level of education completed is below S.4	24,466	81.9
Females aged 15 years and above whose highest level of education completed is below S.4	28,303	82.4
2.5: Persons not in School and Highest Level Completed is "O" Level	Number	Percent
Persons aged 18 years and above whose highest level of education completed is "O" level (S.4)	5,233	7.4
Males aged 18 years and above whose highest level of education completed is "O" level (S.4)	2,317	7.3
Females aged 18 years and above whose highest level of education completed is "O" level (S.4)	2,916	7.5
2.6: Persons not in School and Highest Level Completed is "A" Level	Number	Percent
Persons aged 20 years and above whose highest level of education completed is "A" level (S.6)	1,208	1.9
Males aged 20 years and above whose highest level of education completed is "A" level (S.6)	745	2.6
Females aged 20 years and above whose highest level of education completed is "A" level (S.6)	463	1.3

3: ILLITERACY STATUS

3.1: Persons aged 18 years and above	Number	Percent
Persons aged 18 years and above who are illiterate	13,292	18.8
Males aged 18 years and above who are illiterate	5,199	16.3
Females aged 18 years and above who are illiterate	8,093	20.8
3.2: Other age groups	Number	Percent
Persons aged 10-17 years who are illiterate	5,884	16.5
Persons aged 18-30 years who are illiterate	3,162	10.2
Persons aged 60 years and above who are illiterate	4,127	46.6

4: OWNERSHIP OF A BIRTH CERTIFICATE

4.1: Children with birth certificates	Number	Percent
Children less than 1 year who have a birth certificate	982	19.8
Children less than 5 years who have a birth certificate	5,100	19.0
Children 0-8 years who have a birth certificate	8,736	18.1
Children 0-17 years who have a birth certificate	14,581	17.1

5: PARENTAL SURVIVAL AND ORPHANHOOD

5.1: Children 0-8 years	Number	Percent
Children 0-8 years who have lost one parent	1,945	4.0
Children 0-8 years who have lost both parents	213	0.4
Children 0-8 years who have lost at least a parent (total number of orphans)	2,158	4.5
Children 0-8 years who have both parents	46,004	95.5
5.2: All children (0-17 years)	Number	Percent
Children 0-17 years who have lost one parent	7,337	8.3
Children 0-17 years who have lost both parents	1,379	1.6
Children 0-17 years who have lost at least a parent (total number of orphans)	8,716	9.8
Children 0-17 years who have both parents	79,874	90.2

6: DISABILITY

6.1: Persons with a disability	Number	Percent
Persons aged 2 years and above with a disability	13,647	9.1
Persons aged 2 years and above with a seeing disability	7,031	4.7
Persons aged 2 years and above with a hearing disability	3,785	2.5
Persons aged 2 years and above with a walking disability	5,588	3.7
Persons aged 2 years and above with a remembering disability	5,676	3.8
Persons aged 2 years and above with multiple disabilities	4,448	34.3
Children aged 2-17 years with a disability	2,439	3.1
Youth aged 18-30 years with a disability	1,639	5.3
Older persons aged 60 years and above with a disability	4,859	54.9

7: MARRIAGE AND CHILDBEARING

7.1: Marital status of the population	Number	Percent
Persons aged 10 years and above who are married	23,174	41.3
Persons aged 18 years and above who are married	22,401	57.7
Females aged 50 years and above who are widowed	4,333	48.1
Females aged 10-17 years who have ever been married	867	5.0
Females aged 10-19 years who have ever been married	2,139	10.5
7.2: Females who have had a birth	Number	Percent
Females aged 12-17 years who have given birth	973	7.7
Females aged 12-19 years who have given birth	2,156	13.7

8: ECONOMIC ACTIVITY AND EMPLOYMENT

8.1: Working persons	Number	Percent
Persons aged 10-15 years who were working	9,612	33.9
Persons aged 10-17 years who were working	13,320	37.4
Persons aged 18-30 years who were working	25,818	83.5
Persons aged 16-64 years who were working	61,245	85.5
Persons aged 18 years and above who were working	61,925	87.7
Persons aged 60 years and above who were working	6,715	75.9
8.2: Youths Not working and not in school		
Youths (Persons aged 18-30 years) who were neither working nor in school	2,266	7.3

9: USE OF ICT

	Number	Percent
9.1: Mobile phone ownership (10 years and above)		46.4
Persons aged 10 years that own at least one mobile phone	49,313	
Males aged 10 years and above that own at least one mobile phone	24,350	48.6
Females aged 10 years and above that own at least one mobile phone	24,963	44.4
9.2: Mobile phone ownership (18-30 years)		65.2
Persons aged 18-30 years and above that own at least one mobile phone	20,146	
Males aged 18-30 years and above that own at least one mobile phone	9,967	71.8
Females aged 18-30 years and above that own at least one mobile phone	10,179	59.8
9.3: Internet Usage (10 years and above)		5.93
Persons aged 10 years and above that use internet	6,296	
Males aged 10 years and above that use internet	3,674	7.34
Females aged 10 years and above that use internet	2,622	4.67
9.4: Internet Usage (18-30 years)		10.9
Persons aged 18-30 years that use internet	3,370	
Males aged 18-30 years that use internet	1,925	13.9
Females aged 18-30 years that use internet	1,445	8.5

10: HOUSING CONDITIONS

	Number	Percent
10.1: Construction Materials For the Dwelling Units		
Households living in dwelling units constructed using permanent roof materials	37,855	97.9
Households living in dwelling units constructed using permanent wall materials	28,601	74.0
Households living in dwelling units constructed using permanent floor materials	20,970	54.2
10.2: Status of Dwelling Units		
Households living in semi-permanent dwelling units	18,315	47.4
Households living in temporary dwelling units	742	1.9

11: ACCESS TO COMMUNITY SERVICES

	Number	Percent
11.1: Access to a Primary school		
Households that are 5 km or more to the nearest primary school, <u>whether public or private</u>	1,285	3.3
Households that are 5 km or more to the nearest <u>public</u> primary school	2,387	6.2
11.2: Access to a Secondary school		
Households that are 5 km or more to the nearest secondary school, <u>whether public or private</u>	7,907	20.4
Households that are 5 km or more to the nearest <u>public</u> secondary school	13,365	34.6
11.3: Access to a Health Facility		
Households that are 5 km or more to the nearest health facility, <u>whether public or private</u>	3,152	8.2
Households that are 5 km or more to the nearest <u>public</u> health facility	5,660	14.6
11.4: Access to a Police post /Police station		
Households that are 5 km or more to the nearest Police Post/Police Station	7,984	20.6

12: HOUSEHOLD HEALTH AND HYGIENE

	Number	Percent
12.1: Ownership of Mosquito nets		
Households that own at least a mosquito net	35,568	92.0
Households that own at least a mosquito net that was received free (Government /NGO)	33,384	93.9
12.2: Source Of Water For Drinking		
Households that have access to piped water	6,626	17.1
Households that use a bore hole	5,386	13.9
12.3: Ownership of a Toilet facility		
Households without any toilet facility	776	2.0
12.4: Other environmental conditions		
Households that <u>properly</u> dispose off solid waste	11,597	30.0
Households which are not living in decent dwellings	37,093	95.9

13: HOUSEHOLD ASSETS

	Number	Percent
13.1: Owner occupied Dwellings		
Households that are owner occupied	25,960	67.1
Male headed households that are owner occupied	17,881	68.9
Female headed households that are owner occupied	8,079	31.1
13.2: Movable Assets		
Households that own a television	5,591	14.5
Households that own a computer	959	2.5
Households that own a bicycle	14,507	37.5
Households that own a radio	28,378	73.4

14: OTHER HOUSEHOLD CHARACTERISTICS

14.1: Main source of information	Number	Percent
Households whose main source of information is a radio	27,228	70.4
Households whose main source of information is a community announcer	2,377	6.1
Households whose main source of information is a telephone	1,770	4.6
14.2: Household Economy and Welfare	Number	Percent
Households that received remittances from abroad in the last 12 months	7,885	20.4
Households where any member possesses a bank account	9,080	23.5
Households that depend on subsistence farming as a main source of livelihood	24,020	62.1
Households with at least one member engaged in a non-agricultural household based enterprise	20,298	87.3
Households where (members aged 5 years and above) consume less than two meals in a day	4,101	10.6
14.3: Source of Energy for lighting	Number	Percent
Households that have access to electricity	8,300	21.5
Households that use tadooba for lighting	23,612	61.1

15: HOUSEHOLD BASED AGRICULTURAL ACTIVITIES

15.1: Household based Agriculture activities	Number	Percent
Households engaged in crop growing	31,737	82.1
Households engaged in maize growing	26,766	69.2
Households engaged in coffee growing	7,690	19.9
Households engaged in growing of beans	27,400	70.9
Households engaged in growing of millet	158	0.4
Households engaged in growing of sweet potatoes	10,855	28.1
Households engaged in growing of matooke	11,915	30.8
Households engaged livestock farming	24,347	63.0
Households engaged in either crop growing or livestock farming	33,130	85.7

BUYAMBA COUNTY CONSTITUENCY

LIST OF TABLES

- 1 Population
- 2 Education
- 3 Illiteracy status
- 4 Ownership of a Birth Certificate
- 5 Parental Survival and Orphanhood
- 6 Disability
- 7 Marriage and Child Bearing
- 8 Economic Activity and Employment
- 9 Use of ICT
- 10 Housing Conditions
- 11 Access to Community Services
- 12 Household Health and Hygiene
- 13 Household Assets
- 14 Other Household Characteristics
- 15 Household Based Agricultural Activities

1: POPULATION

1.1: Population Size	Number	Percent
Total population	134,543	
Total male population	65,822	48.9
Total female population	68,721	51.1
Sex ratio (males per 100 females)	95.8	
1.2: Households	Number	Percent
Total households	28,835	
Households headed by males	21,859	75.8
Households headed by females	6,976	24.2
Households headed by children (aged 10-17 years)	91	0.3
Households headed by youth (aged 18-30 years)	7,096	24.6
Households headed by older persons (aged 60 years and above)	4,820	16.7
1.3: Population by Age groups	Number	Percent
Population aged 0-17 years	78,757	58.9
Population aged 18-30 years	23,929	17.9
Population aged 31-59 years	25,227	18.9
Population aged 60 years and over	5,840	4.4
1.4: Population by Special Age groups	Number	Percent
Population aged Less than one Year	5,073	3.8
Population aged 0-4 Years	25,896	19.4
Population aged 0-8 Years	45,297	33.9
Population aged 2-8 Years	35,302	26.4
Population aged 2-17 Years	68,762	51.4
Population aged 6-12 Years	31,353	23.4
Population aged 6-15 Years	42,567	31.8
Population aged 10-15 Years	23,956	17.9
Population aged 10-17 Years	29,310	21.9
Population aged 15-24 Years	22,666	16.9
Population aged 16-64 Years	56,491	42.2
Population aged 15-29 Years	30,205	22.5
Population aged 2 Years and Over	123,758	92.5
Population aged 10 Years and Over	84,306	63.0
Population aged 15 Years and Over	63,348	47.4
Population aged 18 Years and Over	54,996	41.1
Population aged 20 Years and Over	50,368	37.7
Population aged 65 Years and over	3,859	2.9

2: EDUCATION

	Number	Percent
2.1: Non School attendance of	4,913	11.5
Persons aged 6-15 years not attending school		
Males aged 6-15 years not attending school	2,652	12.2
Females aged 6-15 years not attending school	2,261	10.8
2.2: Persons attending Primary school	25,518	81.4
Persons aged 6-12 years attending primary school		
Males aged 6-12 years attending primary school	5,835	80.6
Females aged 6-12 years attending primary school	3,097	82.2
2.3: Persons attending Secondary school	2,738	21.5
Persons aged 13-18 years attending secondary school		
Males aged 13-18 years attending secondary school	15,083	21.1
Females aged 13-18 years attending secondary school	7,813	22.0
2.4: Persons not in School and Highest Level Completed is below S.4	40,905	92.4
Persons aged 15 years and above whose highest level of education completed is below S.4		
Males aged 15 years and above whose highest level of education completed is below S.4	19,640	91.2
Females aged 15 years and above whose highest level of education completed is below S.4	21,265	93.5
2.5: Persons not in School and Highest Level Completed is "O" Level	1,975	3.6
Persons aged 18 years and above whose highest level of education completed is "O" level (S.4)		
Males aged 18 years and above whose highest level of education completed is "O" level (S.4)	1,050	4.2
Females aged 18 years and above whose highest level of education completed is "O" level (S.4)	925	3.1
2.6: Persons not in School and Highest Level Completed is "A" Level	297	0.6
Persons aged 20 years and above whose highest level of education completed is "A" level (S.6)		
Males aged 20 years and above whose highest level of education completed is "A" level (S.6)	211	0.9
Females aged 20 years and above whose highest level of education completed is "A" level (S.6)	86	0.3

3: ILLITERACY STATUS

3.1: Persons aged 18 years and above	Number	Percent
Persons aged 18 years and above who are illiterate	19,087	34.7
Males aged 18 years and above who are illiterate	6,910	27.9
Females aged 18 years and above who are illiterate	12,177	40.3
3.2: Other age groups	Number	Percent
Persons aged 10-17 years who are illiterate	8,141	27.8
Persons aged 18-30 years who are illiterate	5,251	21.9
Persons aged 60 years and above who are illiterate	3,753	64.3

4: OWNERSHIP OF A BIRTH CERTIFICATE

4.1: Children with birth certificates	Number	Percent
Children less than 1 year who have a birth certificate	843	16.6
Children less than 5 years who have a birth certificate	4,993	19.3
Children 0-8 years who have a birth certificate	8,919	19.7
Children 0-17 years who have a birth certificate	15,194	19.9

5: PARENTAL SURVIVAL AND ORPHANHOOD

5.1: Children 0-8 years	Number	Percent
Children 0-8 years who have lost one parent	1,697	3.7
Children 0-8 years who have lost both parents	132	0.3
Children 0-8 years who have lost at least a parent (total number of orphans)	1,829	4
Children 0-8 years who have both parents	43,468	96
5.2: All children (0-17 years)	Number	Percent
Children 0-17 years who have lost one parent	5,476	7
Children 0-17 years who have lost both parents	692	0.9
Children 0-17 years who have lost at least a parent (total number of orphans)	6,168	7.8
Children 0-17 years who have both parents	72,589	92.2

6: DISABILITY

6.1: Persons with a disability	Number	Percent
Persons aged 2 years and above with a disability	11,768	9.5
Persons aged 2 years and above with a seeing disability	6,639	5.4
Persons aged 2 years and above with a hearing disability	3,727	3
Persons aged 2 years and above with a walking disability	4,475	3.6
Persons aged 2 years and above with a remembering disability	4,680	3.8
Persons aged 2 years and above with multiple disabilities	4,029	35.9
Children aged 2-17 years with a disability	2,309	3.4
Youth aged 18-30 years with a disability	1,555	6.5
Older persons aged 60 years and above with a disability	3,203	54.8

7: MARRIAGE AND CHILDBEARING

7.1: Marital status of the population	Number	Percent
Persons aged 10 years and above who are married	22,053	49.5
Persons aged 18 years and above who are married	21,164	70
Females aged 50 years and above who are widowed	2,698	43.6
Females aged 10-17 years who have ever been married	983	6.9
Females aged 10-19 years who have ever been married	2,466	14.7
7.2: Females who have had a birth	Number	Percent
Females aged 12-17 years who have given birth	958	9.4
Females aged 12-19 years who have given birth	2,082	16.5

8: ECONOMIC ACTIVITY AND EMPLOYMENT

8.1: Working persons	Number	Percent
Persons aged 10-15 years who were working	9,080	37.9
Persons aged 10-17 years who were working	12,296	42
Persons aged 18-30 years who were working	21,221	88.7
Persons aged 16-64 years who were working	50,471	89.3
Persons aged 18 years and above who were working	50,086	91.1
Persons aged 60 years and above who were working	4,648	79.6
8.2: Youths Not working and not in school		
Youths (Persons aged 18-30 years) who were neither working nor in school	1,185	5.0

9: USE OF ICT

	Number	Percent
9.1: Mobile phone ownership (10 years and above)		
Persons aged 10 years that own at least one mobile phone	29,738	35.3
Males aged 10 years and above that own at least one mobile phone	16,583	41.7
Females aged 10 years and above that own at least one mobile phone	13,155	29.6
9.2: Mobile phone ownership (18-30 years)		
Persons aged 18-30 years and above that own at least one mobile phone	11,021	46.1
Males aged 18-30 years and above that own at least one mobile phone	6,273	58.4
Females aged 18-30 years and above that own at least one mobile phone	4,748	36.0
9.3: Internet Usage (10 years and above)		
Persons aged 10 years and above that use internet	2,171	2.58
Males aged 10 years and above that use internet	1,477	3.71
Females aged 10 years and above that use internet	694	1.56
9.4: Internet Usage (18-30 years)		
Persons aged 18-30 years that use internet	1,006	4.2
Males aged 18-30 years that use internet	663	6.2
Females aged 18-30 years that use internet	343	2.6

10: HOUSING CONDITIONS

	Number	Percent
10.1: Construction Materials For the Dwelling Units		
Households living in dwelling units constructed using permanent roof materials	26,152	90.7
Households living in dwelling units constructed using permanent wall materials	14,797	51.3
Households living in dwelling units constructed using permanent floor materials	5,748	19.9
10.2: Status of Dwelling Units		
Households living in semi-permanent dwelling units	21,062	73.0
Households living in temporary dwelling units	2,545	8.8

11: ACCESS TO COMMUNITY SERVICES

11.1: Access to a Primary school	Number	Percent
Households that are 5 km or more to the nearest primary school, <u>whether public or private</u>	3,466	12.0
Households that are 5 km or more to the nearest <u>public</u> primary school	5,118	17.7
11.2: Access to a Secondary school	Number	Percent
Households that are 5 km or more to the nearest secondary school, <u>whether public or private</u>	16,497	57.2
Households that are 5 km or more to the nearest <u>public</u> secondary school	19,951	69.2
11.3: Access to a Health Facility	Number	Percent
Households that are 5 km or more to the nearest health facility, <u>whether public or private</u>	7,000	24.3
Households that are 5 km or more to the nearest <u>public</u> health facility	9,555	33.1
11.4: Access to a Police post /Police station	Number	Percent
Households that are 5 km or more to the nearest Police Post/Police Station	12,115	42.0

12: HOUSEHOLD HEALTH AND HYGIENE

12.1:Ownership of Mosquito nets	Number	Percent
Households that own at least a mosquito net	27,488	95.3
Households that own at least a mosquito net that was received free (Government /NGO)	27,145	98.8
12.2: Source Of Water For Drinking	Number	Percent
Households that have access to piped water	262	0.9
Households that use a bore hole	445	1.5
12.3:Ownership of a Toilet facility	Number	Percent
Households without any toilet facility	1,540	5.3
12.4: Other environmental conditions	Number	Percent
Households that <u>properly</u> dispose off solid waste	5,026	17.4
Households which are not living in decent dwellings	28,567	99.1

13: HOUSEHOLD ASSETS

13.1: Owner occupied Dwellings	Number	Percent
Households that are owner occupied	23,936	83.0
Male headed households that are owner occupied	18,277	76.4
Female headed households that are owner occupied	5,659	23.6
13.2: Movable Assets	Number	Percent
Households that own a television	642	2.2
Households that own a computer	278	1.0
Households that own a bicycle	8,190	28.4
Households that own a radio	19,536	67.8

14: OTHER HOUSEHOLD CHARACTERISTICS

14.1: Main source of information	Number	Percent
Households whose main source of information is a radio	20,061	69.6
Households whose main source of information is a community announcer	1,718	6.0
Households whose main source of information is a telephone	1,158	4.0
14.2: Household Economy and Welfare	Number	Percent
Households that received remittances from abroad in the last 12 months	5,462	18.9
Households where any member possesses a bank account	3,639	12.6
Households that depend on subsistence farming as a main source of livelihood	24,727	85.8
Households with at least one member engaged in a non-agricultural household based enterprise	10,257	90.1
Households where (members aged 5 years and above) consume less than two meals in a day	2,620	9.1
14.3: Source of Energy for lighting	Number	Percent
Households that have access to electricity	2,517	8.7
Households that use tadooba for lighting	22,133	76.8

15: HOUSEHOLD BASED AGRICULTURAL ACTIVITIES

15.1: Household based Agriculture activities	Number	Percent
Households engaged in crop growing	27,273	94.6
Households engaged in maize growing	24,743	85.8
Households engaged in coffee growing	3,736	13.0
Households engaged in growing of beans	25,178	87.3
Households engaged in growing of millet	1,569	5.4
Households engaged in growing of sweet potatoes	3,271	11.3
Households engaged in growing of matooke	13,636	47.3
Households engaged livestock farming	19,168	66.5
Households engaged in either crop growing or livestock farming	27,669	96.0

APPENDICES

Appendix 1: Population by Sex and Type of Residence by District, Uganda 2014

Central	Male	Female	Urban	Rural	Total
Buikwe	207,324	215,447	299,628	123,143	422,771
Bukomansimbi	75,109	76,304	12,797	138,616	151,413
Butambala	50,082	50,758	15,553	85,287	100,840
Buvuma	48,414	41,476	9,935	79,955	89,890
Gomba	82,167	77,755	12,439	147,483	159,922
Kalangala	31,349	22,944	4,980	49,313	54,293
Kalungu	89,679	93,553	37,094	146,138	183,232
Kampala	712,762	794,318	1,507,080	0	1,507,080
Kayunga	180,706	187,356	27,061	341,001	368,062
Kiboga	75,847	72,371	33,520	114,698	148,218
Kyankwanzi	111,539	103,154	30,621	184,072	214,693
Luwero	226,805	230,153	95,749	361,209	456,958
Lwengo	133,474	141,479	42,919	232,034	274,953
Lyantonde	46,714	47,039	13,823	79,930	93,753
Masaka	145,552	151,452	103,227	193,777	297,004
Mityana	165,717	163,247	107,645	221,319	328,964
Mpigi	125,404	125,144	43,360	207,188	250,548
Mubende	346,654	337,694	113,803	570,545	684,348
Mukono	289,757	307,047	162,710	434,094	596,804
Nakaseke	104,795	92,578	39,397	157,976	197,373
Nakasongola	93,323	88,472	24,667	157,128	181,795
Rakai	254,366	261,943	34,041	482,268	516,309
Ssembabule	126,084	126,513	16,949	235,648	252,597
Wakiso	949,035	1,048,383	1,681,449	315,969	1,997,418

Eastern	Male	Female	Urban	Rural	Total
Amuria	132,521	138,407	17,385	253,543	270,928
Budaka	100,620	106,977	23,809	183,788	207,597
Bududa	105,820	104,353	13,753	196,420	210,173
Bugiri	185,925	196,988	64,223	318,690	382,913
Bukedea	98,684	104,916	10,927	192,673	203,600
Bukwo	45,058	44,298	12,094	77,262	89,356
Bulambuli	86,108	88,405	16,867	157,646	174,513
Busia	156,447	167,215	54,798	268,864	323,662
Butaleja	119,466	124,687	33,201	210,952	244,153
Buyende	158,615	164,452	23,201	299,866	323,067
Iganga	241,182	263,015	92,792	411,405	504,197
Jinja	230,189	241,053	172,714	298,528	471,242
Kaberamaido	106,042	108,984	4,032	210,994	215,026
Kaliro	115,969	120,230	16,753	219,446	236,199
Kamuli	236,389	249,930	58,984	427,335	486,319
Kapchorwa	51,658	53,528	44,211	60,975	105,186
Katakwi	81,673	84,558	9,280	156,951	166,231
Kibuku	97,476	104,557	17,436	184,597	202,033
Kumi	116,457	122,811	36,493	202,775	239,268
Kween	47,404	46,263	6,462	87,205	93,667

Luuka	113,566	124,454	10,264	227,756	238,020
Manafwa	173,580	180,245	53,837	299,988	353,825
Mayuge	229,252	243,987	33,756	439,483	473,239
Mbale	233,339	255,621	126,544	362,416	488,960
Namayingo	106,303	109,140	15,740	199,703	215,443
Namutumba	123,911	128,646	18,679	233,878	252,557
Ngora	68,414	73,505	15,148	126,771	141,919
Pallisa	188,125	198,765	37,937	348,953	386,890
Serere	139,493	146,410	12,158	273,745	285,903
Sironko	120,862	121,559	34,104	208,317	242,421
Soroti	144,976	151,857	49,685	247,148	296,833
Tororo	250,830	266,250	72,325	444,755	517,080

Northern	Male	Female	Urban	Rural	Total
Abim	52,456	55,510	17,168	90,798	107,966
Adjumani	108,298	116,953	41,064	184,187	225,251
Agago	110,495	117,297	29,153	198,639	227,792
Alebtong	110,989	116,552	6,702	220,839	227,541
Amolatar	73,014	74,152	21,479	125,687	147,166
Amudat	54,246	51,523	11,786	93,983	105,769
Amuru	91,284	95,412	9,302	177,394	186,696
Apac	180,995	187,631	75,300	293,326	368,626
Arua	374,755	407,322	61,962	720,115	782,077
Dokolo	89,476	93,617	20,135	162,958	183,093
Gulu	134,571	141,042	150,306	125,307	275,613
Kaabong	79,207	88,672	11,559	156,320	167,879
Kitgum	99,258	104,790	75,581	128,467	204,048
Koboko	102,250	104,245	57,902	148,593	206,495
Kole	117,164	122,163	8,860	230,467	239,327
Kotido	86,169	94,881	66,454	114,596	181,050
Lamwo	65,106	69,265	21,700	112,671	134,371
Lira	196,663	211,380	101,155	306,888	408,043
Maracha	87,900	98,234	9,291	176,843	186,134
Moroto	49,746	53,686	14,196	89,236	103,432
Moyo	68,940	70,072	10,579	128,433	139,012
Nakapiripirit	74,578	82,112	3,727	152,963	156,690
Napak	65,518	76,706	4,733	137,491	142,224
Nebbi	191,104	205,690	58,069	338,725	396,794
Nwoya	65,969	67,537	13,592	119,914	133,506
Omoro	78,837	81,895	18,952	141,780	160,732
Otuke	51,187	53,067	6,213	98,041	104,254
Oyam	187,121	196,523	18,399	365,245	383,644
Pader	86,635	91,369	13,382	164,622	178,004
Yumbe	230,626	254,196	34,806	450,016	484,822
Zombo	115,824	124,257	43,723	196,358	240,081

Western	Male	Female	Urban	Rural	Total
----------------	-------------	---------------	--------------	--------------	--------------

Buhweju	59,059	61,661	2,956	117,764	120,720
Buliisa	57,801	55,360	7,238	105,923	113,161
Bundibugyo	108,435	115,952	40,219	184,168	224,387
Bushenyi	114,207	120,236	56,070	178,373	234,443
Hoima	287,906	285,080	105,944	467,042	572,986
Ibanda	121,440	128,185	136,860	112,765	249,625
Isingiro	235,621	250,739	58,408	427,952	486,360
Kabale	158,238	173,097	78,585	252,750	331,335
Kabarole	233,648	235,588	158,231	311,005	469,236
Kagadi	171,812	179,221	45,286	305,747	351,033
Kakumiro	147,157	145,951	9,834	283,274	293,108
Kamwenge	202,503	211,951	22,840	391,614	414,454
Kanungu	121,081	131,063	51,008	201,136	252,144
Kasese	338,215	356,772	140,050	554,937	694,987
Kibaale	70,815	70,132	6,650	134,297	140,947
Kiruhura	166,214	161,863	31,874	296,203	328,077
Kiryandongo	132,822	133,375	55,770	210,427	266,197
Kisoro	126,055	155,650	27,611	254,094	281,705
Kyegegwa	140,617	141,020	26,294	255,343	281,637
Kyenjojo	210,599	211,605	64,812	357,392	422,204
Masindi	148,121	142,992	94,438	196,675	291,113
Mbarara	230,082	242,547	195,318	277,311	472,629
Mitooma	86,484	96,960	11,396	172,048	183,444
Ntoroko	34,038	32,967	23,789	43,216	67,005
Ntungamo	232,469	251,372	71,485	412,356	483,841
Rubanda	92,011	104,885	26,669	170,227	196,896
Rubirizi	61,765	67,384	17,274	111,875	129,149
Rukungiri	150,016	164,678	43,576	271,118	314,694
Sheema	99,225	108,118	110,256	97,087	207,343


<p>Hello, my name is and I work with Uganda Bureau of Statistics (UBOS). We are conducting the National Population and Housing Census 2014. We are visiting each and every household in the country collecting information about individuals and the homesteads they live in. It takes about 40 minutes to complete the interview. Whatever information you provide will be kept strictly confidential. We would very much appreciate your participation and co-operation in this Census.</p>	<p>Result Code (R1)</p> <p>1 Completed 2 Partially Completed 3 Not Interviewed</p>	<p>Ethnicity (P8)</p> <table border="1"> <tr> <td>511 Acholi</td> <td>533 Banyaruguru</td> <td>555 Kakwa</td> <td rowspan="2">Country Of Citizenship For Non-Ugandans</td> </tr> <tr> <td>512 Aliba</td> <td>534 Banyarwanda</td> <td>556 Karimojong</td> </tr> <tr> <td>513 Alur</td> <td>535 Banyole</td> <td>557 Kebu (Okebu)</td> <td></td> </tr> <tr> <td>514 Aringa</td> <td>536 Banyoro</td> <td>558 Kuku</td> <td>671 Kenya</td> </tr> <tr> <td>515 Baamba</td> <td>537 Baruli</td> <td>559 Kumam</td> <td>672 Tanzania</td> </tr> <tr> <td>516 Babukusu</td> <td>538 Barundi</td> <td>560 Lango</td> <td>673 Rwanda</td> </tr> <tr> <td>517 Babwisi</td> <td>539 Basamia</td> <td>561 Lendu</td> <td>674 Burundi</td> </tr> <tr> <td>518 Bafumbira</td> <td>540 Basoga</td> <td>562 Lugbara</td> <td>675 South Sudan</td> </tr> <tr> <td>519 Baganda</td> <td>541 Basongora</td> <td>563 Madi</td> <td>676 Dem. Rep. Of Congo</td> </tr> <tr> <td>520 Bagisu</td> <td>542 Batagwenda</td> <td>564 Mening</td> <td>677 Somalia</td> </tr> <tr> <td>521 Bagungu</td> <td>543 Batoro</td> <td>565 Mvuba</td> <td>678 Other Africa</td> </tr> <tr> <td>522 Bagwe</td> <td>544 Batuku</td> <td>566 Napore</td> <td>681 United Kingdom</td> </tr> <tr> <td>523 Bagwere</td> <td>545 Batwa</td> <td>567 Ngikutio</td> <td>682 Other Europe</td> </tr> <tr> <td>524 Bahehe</td> <td>546 Chope</td> <td>568 Nubi</td> <td>683 Asia</td> </tr> <tr> <td>525 Bahororo</td> <td>547 Dodoth</td> <td>569 Nyangia</td> <td>684 USA</td> </tr> <tr> <td>526 Bakenyi</td> <td>548 Ethur</td> <td>570 Pokot</td> <td>685 Canada</td> </tr> <tr> <td>527 Bakiga</td> <td>549 Gimara</td> <td>571 Reli</td> <td>686 Central & Latin America</td> </tr> <tr> <td>528 Bakonzo</td> <td>550 Ik (Teuso)</td> <td>572 Sabiny</td> <td>687 Australia</td> </tr> <tr> <td>529 Banyabindi</td> <td>551 Iteso</td> <td>573 Shana</td> <td>688 Oceania</td> </tr> <tr> <td>530 Banyabutumbi</td> <td>552 Jie</td> <td>574 So (Tepeth)</td> <td>689 Non-Ugandan-Not Stated</td> </tr> <tr> <td>531 Banyankore</td> <td>553 Jonam</td> <td>575 Vonoma</td> <td></td> </tr> <tr> <td>532 Banyara</td> <td>554 Jopadhola</td> <td>576 Other Ugandan</td> <td></td> </tr> </table>	511 Acholi	533 Banyaruguru	555 Kakwa	Country Of Citizenship For Non-Ugandans	512 Aliba	534 Banyarwanda	556 Karimojong	513 Alur	535 Banyole	557 Kebu (Okebu)		514 Aringa	536 Banyoro	558 Kuku	671 Kenya	515 Baamba	537 Baruli	559 Kumam	672 Tanzania	516 Babukusu	538 Barundi	560 Lango	673 Rwanda	517 Babwisi	539 Basamia	561 Lendu	674 Burundi	518 Bafumbira	540 Basoga	562 Lugbara	675 South Sudan	519 Baganda	541 Basongora	563 Madi	676 Dem. Rep. Of Congo	520 Bagisu	542 Batagwenda	564 Mening	677 Somalia	521 Bagungu	543 Batoro	565 Mvuba	678 Other Africa	522 Bagwe	544 Batuku	566 Napore	681 United Kingdom	523 Bagwere	545 Batwa	567 Ngikutio	682 Other Europe	524 Bahehe	546 Chope	568 Nubi	683 Asia	525 Bahororo	547 Dodoth	569 Nyangia	684 USA	526 Bakenyi	548 Ethur	570 Pokot	685 Canada	527 Bakiga	549 Gimara	571 Reli	686 Central & Latin America	528 Bakonzo	550 Ik (Teuso)	572 Sabiny	687 Australia	529 Banyabindi	551 Iteso	573 Shana	688 Oceania	530 Banyabutumbi	552 Jie	574 So (Tepeth)	689 Non-Ugandan-Not Stated	531 Banyankore	553 Jonam	575 Vonoma		532 Banyara	554 Jopadhola	576 Other Ugandan		<p>Religion (P9)</p> <p>10 No Religion 11 Anglican 12 Catholic 13 Muslim 14 Seventh-Day Adventist 15 Orthodox 16 Pentecostal/ Born Again/ Evangelical 17 Baha'i 18 Baptist 19 Jews 20 Presbyterian 21 Mammon 22 Hindu 23 Buddhist 24 Jehovah's Witness 25 Salvation Army 26 Traditional 27 Others</p>	<p>Section 5: Crop Codes</p> <table border="1"> <tr> <td>10 Maize</td> <td>39 Cocoa</td> </tr> <tr> <td>11 Beans</td> <td>40 Paw Paw</td> </tr> <tr> <td>12 Banana (Food)</td> <td>41 Eggplants</td> </tr> <tr> <td>13 Cassava</td> <td>42 Onions</td> </tr> <tr> <td>14 Sweet Potatoes</td> <td>43 Passion fruit</td> </tr> <tr> <td>15 G/nuts</td> <td>44 Greens (Doodo/ Nakati/ Bbugga/ Malakwang, etc)</td> </tr> <tr> <td>16 Sorghum</td> <td>45 Vanilla</td> </tr> <tr> <td>17 Millets</td> <td>46 Tea</td> </tr> <tr> <td>18 Sim Sim</td> <td>47 Wheat</td> </tr> <tr> <td>19 Banana (Beer)</td> <td>48 Barley</td> </tr> <tr> <td>20 Irish Potatoes</td> <td>49 Spinach</td> </tr> <tr> <td>21 Soya Beans</td> <td>50 Cucumber</td> </tr> <tr> <td>22 Rice</td> <td>51 Water melons</td> </tr> <tr> <td>23 Banana (sweet)</td> <td>52 Carrots</td> </tr> <tr> <td>24 Field Peas (Kawo)</td> <td>53 Garlic</td> </tr> <tr> <td>25 Cow Peas</td> <td>54 Mushrooms</td> </tr> <tr> <td>26 Pigeon Peas</td> <td>55 Tobacco</td> </tr> <tr> <td>27 Sugar cane</td> <td>56 Grapes</td> </tr> <tr> <td>28 Yam</td> <td>57 Lemons & Limes</td> </tr> <tr> <td>29 Avocado</td> <td>58 Tangarines & Mandarines</td> </tr> <tr> <td>30 Tomatoes</td> <td>59 Straw berries</td> </tr> <tr> <td>31 Sunflower</td> <td>60 Apples & Apricots</td> </tr> <tr> <td>32 Cotton</td> <td>61 Pears</td> </tr> <tr> <td>33 Jackfruit</td> <td>62 Coffee Arabica</td> </tr> <tr> <td>34 Pineapples</td> <td>63 Coffee Robusta</td> </tr> <tr> <td>35 Pumpkins</td> <td>64 Other crops</td> </tr> <tr> <td>36 Mango</td> <td>65 N/A</td> </tr> <tr> <td>37 Oranges</td> <td></td> </tr> <tr> <td>38 Cabbage</td> <td></td> </tr> </table>	10 Maize	39 Cocoa	11 Beans	40 Paw Paw	12 Banana (Food)	41 Eggplants	13 Cassava	42 Onions	14 Sweet Potatoes	43 Passion fruit	15 G/nuts	44 Greens (Doodo/ Nakati/ Bbugga/ Malakwang, etc)	16 Sorghum	45 Vanilla	17 Millets	46 Tea	18 Sim Sim	47 Wheat	19 Banana (Beer)	48 Barley	20 Irish Potatoes	49 Spinach	21 Soya Beans	50 Cucumber	22 Rice	51 Water melons	23 Banana (sweet)	52 Carrots	24 Field Peas (Kawo)	53 Garlic	25 Cow Peas	54 Mushrooms	26 Pigeon Peas	55 Tobacco	27 Sugar cane	56 Grapes	28 Yam	57 Lemons & Limes	29 Avocado	58 Tangarines & Mandarines	30 Tomatoes	59 Straw berries	31 Sunflower	60 Apples & Apricots	32 Cotton	61 Pears	33 Jackfruit	62 Coffee Arabica	34 Pineapples	63 Coffee Robusta	35 Pumpkins	64 Other crops	36 Mango	65 N/A	37 Oranges		38 Cabbage	
	511 Acholi	533 Banyaruguru	555 Kakwa	Country Of Citizenship For Non-Ugandans																																																																																																																																																	
	512 Aliba	534 Banyarwanda	556 Karimojong																																																																																																																																																		
	513 Alur	535 Banyole	557 Kebu (Okebu)																																																																																																																																																		
	514 Aringa	536 Banyoro	558 Kuku	671 Kenya																																																																																																																																																	
	515 Baamba	537 Baruli	559 Kumam	672 Tanzania																																																																																																																																																	
	516 Babukusu	538 Barundi	560 Lango	673 Rwanda																																																																																																																																																	
	517 Babwisi	539 Basamia	561 Lendu	674 Burundi																																																																																																																																																	
	518 Bafumbira	540 Basoga	562 Lugbara	675 South Sudan																																																																																																																																																	
	519 Baganda	541 Basongora	563 Madi	676 Dem. Rep. Of Congo																																																																																																																																																	
520 Bagisu	542 Batagwenda	564 Mening	677 Somalia																																																																																																																																																		
521 Bagungu	543 Batoro	565 Mvuba	678 Other Africa																																																																																																																																																		
522 Bagwe	544 Batuku	566 Napore	681 United Kingdom																																																																																																																																																		
523 Bagwere	545 Batwa	567 Ngikutio	682 Other Europe																																																																																																																																																		
524 Bahehe	546 Chope	568 Nubi	683 Asia																																																																																																																																																		
525 Bahororo	547 Dodoth	569 Nyangia	684 USA																																																																																																																																																		
526 Bakenyi	548 Ethur	570 Pokot	685 Canada																																																																																																																																																		
527 Bakiga	549 Gimara	571 Reli	686 Central & Latin America																																																																																																																																																		
528 Bakonzo	550 Ik (Teuso)	572 Sabiny	687 Australia																																																																																																																																																		
529 Banyabindi	551 Iteso	573 Shana	688 Oceania																																																																																																																																																		
530 Banyabutumbi	552 Jie	574 So (Tepeth)	689 Non-Ugandan-Not Stated																																																																																																																																																		
531 Banyankore	553 Jonam	575 Vonoma																																																																																																																																																			
532 Banyara	554 Jopadhola	576 Other Ugandan																																																																																																																																																			
10 Maize	39 Cocoa																																																																																																																																																				
11 Beans	40 Paw Paw																																																																																																																																																				
12 Banana (Food)	41 Eggplants																																																																																																																																																				
13 Cassava	42 Onions																																																																																																																																																				
14 Sweet Potatoes	43 Passion fruit																																																																																																																																																				
15 G/nuts	44 Greens (Doodo/ Nakati/ Bbugga/ Malakwang, etc)																																																																																																																																																				
16 Sorghum	45 Vanilla																																																																																																																																																				
17 Millets	46 Tea																																																																																																																																																				
18 Sim Sim	47 Wheat																																																																																																																																																				
19 Banana (Beer)	48 Barley																																																																																																																																																				
20 Irish Potatoes	49 Spinach																																																																																																																																																				
21 Soya Beans	50 Cucumber																																																																																																																																																				
22 Rice	51 Water melons																																																																																																																																																				
23 Banana (sweet)	52 Carrots																																																																																																																																																				
24 Field Peas (Kawo)	53 Garlic																																																																																																																																																				
25 Cow Peas	54 Mushrooms																																																																																																																																																				
26 Pigeon Peas	55 Tobacco																																																																																																																																																				
27 Sugar cane	56 Grapes																																																																																																																																																				
28 Yam	57 Lemons & Limes																																																																																																																																																				
29 Avocado	58 Tangarines & Mandarines																																																																																																																																																				
30 Tomatoes	59 Straw berries																																																																																																																																																				
31 Sunflower	60 Apples & Apricots																																																																																																																																																				
32 Cotton	61 Pears																																																																																																																																																				
33 Jackfruit	62 Coffee Arabica																																																																																																																																																				
34 Pineapples	63 Coffee Robusta																																																																																																																																																				
35 Pumpkins	64 Other crops																																																																																																																																																				
36 Mango	65 N/A																																																																																																																																																				
37 Oranges																																																																																																																																																					
38 Cabbage																																																																																																																																																					
<p>Residential Status (P4)</p> <p>1 Usual household member 2 Regular household member 3 Visitor/Guest</p>	<p>Major Field of Specialization (P20)</p> <p>10 Health Sciences 11 Life & Biological Sciences 12 Animal Sciences 13 Physical/Natural Sciences 14 Sport Sciences 15 Engineering 16 Social Sciences & History 17 Agriculture 18 Computer & Information Sciences 19 Arts 20 Food science 21 Business Studies 22 Mathematics 23 Economics 24 Demography and Population 25 Community and Development Studies 26 Languages & Literature 27 Education 28 Gender Studies 29 Psychology 30 Sociology 31 Special Needs Education 32 Peace and conflict studies 33 Law & Legal Studies 34 Visual & Performing Arts 35 Commerce 36 Procurement and Supply Mgt 37 Administration and Human Resource 38 Communication and Journalism 39 Philosophy & Religion 40 Architecture & Physical Planning 41 Home Economics 42 Library and Archives Sciences 43 Tourism and hospitality 44 Statistics 45 Ethic Studies 96 Other specify 97 NA</p>	<p>Type of Disability (P14-P17)</p> <p>1 No - no difficulty 2 Yes - some difficulty 3 Yes - a lot of difficulty 4 Cannot do at all 7 Not Applicable 8 Don't know</p>																																																																																																																																																			
<p>Grade Completed (P19)</p> <p>01 Never been to school 02 Did not complete Pre-Primary 03 Completed Pre-Primary 04 In P1 but did not complete / attend Pre-Primary 10 Did not complete P1 11 P1 12 P2 13 P3 14 P4 15 P5 16 P6 17 P7 21 J1-J3 31 S1 32 S2 33 S3 34 S4 35 S5 36 S6 41 Professional Certificate 42 Diploma 43 First Degree 44 Post Graduate Certificate 45 Post Graduate Diploma 46 Masters Degree 47 PhD 96 Other 97 NA</p>	<p>School Attendance (P18)</p> <p>1 Attending school in 2014 2 Left school in 2014 3 Left school before 2014 4 Never been to school 7 NA</p>	<p>Activity Status (P22)</p> <p>10 Working for pay 11 Employer 12 Own account worker 13 Helping without pay in hh business 14 Volunteer 15 An apprentice (not paid) 16 Looking for work 17 Not working and not looking for work 18 Household chores 19 Full time student 20 Retired/pensioner 21 Too old to work 22 To young to work 96 Other 97 NA</p>																																																																																																																																																			
<p>Religion (P9)</p> <p>10 No Religion 11 Anglican 12 Catholic 13 Muslim 14 Seventh-Day Adventist 15 Orthodox 16 Pentecostal/ Born Again/ Evangelical 17 Baha'i 18 Baptist 19 Jews 20 Presbyterian 21 Mammon 22 Hindu 23 Buddhist 24 Jehovah's Witness 25 Salvation Army 26 Traditional 27 Others</p>	<p>Marital Status (P26)</p> <p>1 Never married 2 Currently married/Cohabiting (Monogamous) 3 Currently married/Cohabiting (Polygamous) 4 Widowed 5 Separated 6 Divorced 7 NA 8 Don't Know</p>	<p>Occupation (P23)</p> <p>10 Subsistence Agricultural Workers 11 Agricultural, fishery and related labourers 12 Subsistence animal rearing 13 Retailers of food and beverages 14 Retailers of general merchandise and domestic wares 15 Market oriented gardeners and crop growers 16 Primary education teaching associate professionals 17 Restaurant services workers and cooks 18 General laborers 19 Stall and market salespersons 20 Domestic helpers e.g. house girls 21 Motor Vehicle Drivers 22 Boda boda riders (motor cycle) 23 Boda boda riders (bicycle) 24 Foods and related products processing trades workers 25 Street vendors and related workers e.g. food, hawkers, tel. sales 26 Other personal services workers e.g. hair dressers, barbers 27 Construction laborers 28 Textiles, footwear and other personal effects goods 29 Builders, brick layers, masons and other related workers 30 Building finishers and related trades workers 31 Subsistence fishery and related workers 32 Carpenters, cabinet makers, joiners, brush makers etc. 33 Forestry and related workers 34 Fashion and Other models sales persons and demonstrators 35 Textiles and garment trades workers (including tailors) 36 Machinery mechanics and fitters 37 Manufacturing laborers 38 Nurses and Midwives 39 Produce buyers 40 Secondary education teaching professionals 41 Protective service workers, policemen, police wardens 42 Dealers in agricultural and farm Products 43 Messengers, watchers and security workers 44 Market-oriented crop and animal producers 45 Experienced non-professionals in teaching 46 Market oriented fishery workers, hunters, and trappers 47 Transport laborers 48 Foremen, supervisors in elementary occupation services 49 Travel attendants, guides, conductors, 50 Market-oriented animal producers 51 Cashier, teller, and related clerks, money lender, debt collectors 52 Metal molders, welders, sheet metal workers, structural and metal prepares 53 Numerical clerks (Statistical, finance, book keeping and accounting) 54 Handicraft workers in wood, textiles, and related materials 55 Secretaries and Keyboard operating clerks 56 Post-primary education teaching associate professionals 57 retailers of human drugs 58 Traditional medicine practitioners and faith healers 59 Medical assistants 60 Laborers in mining 61 Pre-primary Education Teaching associate professionals 62 Physical science and engineering technicians 63 Electrical and electronic Instrument mechanics and fitters 64 Other street elementary occupation services e.g. shoe polisher, car washers 65 Religion professionals (ordained catechist) 66 Computer assistants and computer equipment operators 67 Finance and sales associate professionals 68 Accountants, business administrators, and business professionals 69 Public and private administrative associate professionals 70 Client Information Clerks 96 Others 97 N/A</p>																																																																																																																																																			

BOOK NUMBER			SHEET NUMBER 02			HOUSEHOLD NUMBER																							
SECTION 1: PARTICULARS OF HOUSEHOLD MEMBERS																													
FOR PERSONS AGED 3 YEARS AND ABOVE			FOR PERSONS AGED 10 YEARS AND ABOVE						DC3			FOR FEMALES (12-54 years) ONLY																	
P0	P18	P19	P20		P21	P22	P23		P24	P25	P26	P27			P28			P29			P30			P31	P32	P33			
Person number	Did [NAME] attend school in 2014, left school or never been to school? (Refer to code list P18)	What is the highest grade / class of formal education that [NAME] completed? (Refer to Code list P19)	What is [NAME'S] field of specialisation? (If no specialisation, write 97)		Can [NAME] read and write a sentence meaningfully in any language? 1=Read & Write 2=Read only 3=Write only 4=No 7=N/A 8=DK	What was [NAME'S] main activity status in the last 7 days? (Refer to code list P22)	What was [NAME'S] main type of work (occupation) during the last 7 days? (DESCRIBE IN NOT LESS THAN TWO WORDS)		Does [NAME] own a mobile phone? If yes, write number of phones (handsets) owned. If none, write 0 if 6+, write 6 7=N/A	Does [NAME] use internet? 1=Yes 2=No 7=N/A 8=DK	What is [NAME'S] current marital status? (Refer to code list P26)	How many children has [NAME] ever borne alive? Of the total children ever borne, how many are boys and how many are girls? If the woman has never given birth, record 00 in the boxes below 97=N/A			Of the total children ever borne, how many are alive? Among these children how many are boys and how many are girls? If the woman has never given birth, record 00 in the boxes below 97=N/A			Of the total children ever borne, how many are dead? Among these children, how many are boys and how many are girls? If the woman has never given birth, record 00 in the boxes below 97=N/A			When did [NAME] have her last live birth? If N/A, write 97 for month, 9997 for year. If Don't Know, write 98 for month, 9998 for year	What is the sex of the last live birth? 1=Male 2=Female 7=N/A	What is the survival status of the last live birth? 1=Alive 2=Dead 7=N/A 8=DK	If the last child is dead, write age at death in completed months. If 60+ months, record 60. Write 97 if N/A					
			Specialisation Detail	Code	Occupation Detail		Code				Total	Boys	Girls	Total	Boys	Girls	Total	Boys	Girls	M	M	Y	Y	Y	Y				
00	2	43	EDUCATION	27	1	10	SECONDARY SCHOOL TEACHER	45	1	1	2	05	02	03	04	01	03	01	01	00	01	20	11	1	2	01			

DC3

01A

DD4						HOUSEHOLD NUMBER								
SECTION 2: HOUSING CONDITIONS						SECTION 3: COMMUNITY SERVICES								
What is the occupancy tenure of the dwelling unit?		What type of dwelling unit does this household occupy?	How many rooms were used on the Census Night for sleeping?	Types of materials mainly used for construction of the roof	Types of materials mainly used for construction of the wall	What is the distance from home to the nearest on foot, irrespective of whether you use the service or not <i>(Record distance in kms, if distance is given in miles, refer to code list H7-H13)</i>						SECTION 4: HOUSEHOLD CHARACTERISTICS		
H1	H2	H3	H4	H5	H6	H7	H8	H9	H10	H11	H12	H13	H14	
10 = Owner occupied 11 = Free Public 12 = Free Private 13 = Subsidized public 14 = Subsidized private 15 = Rented public 16 = Rented private 96 = Other	10 = Detached house (single or multi-storey) 11 = Semi-Detached house 12 = Flat in a Block of Flats 13 = Room or rooms of a Main House 14 = Servants Quarters 15 = Tenement (Muzigo) 16 = Garage 17 = Go down/Basement 18 = Store 96 = Other	If 9 or more were used, record 9	10 = Iron sheets 11 = Tiles 12 = Asbestos 13 = Concrete 14 = Tins 15 = Thatch 96 = Other	10 = Concrete/Stones 11 = Cement Blocks 12 = Burnt/Stabilised bricks 13 = Unburnt bricks with Cement 14 = Unburnt bricks with mud 15 = Wood 16 = Mud and Pole 17 = Tin/Iron sheets 96 = Other	10 = Earth 11 = Rammed earth 12 = Cement screed 13 = Concrete 14 = Tiles 15 = Brick 16 = Stone 17 = Wood 96 = Other	H7 Public Health Facility H8 Private Health Facility H9 Public Primary School H10 Private Primary School				H11 Public Secondary School H12 Private Secondary School H13 Police Station / Police Post			10 = Electricity- National grid (Umeme) 11 = Electricity- Solar 12 = Electricity- Personal Generator 13 = Electricity- Community/thermal plant 14 = Gas 15 = Liquefied Petroleum Gas (LPG) 16 = Biogas 17 = Paraffin-Lantern 18 = Paraffin-Tadooba 19 = Candles 20 = Firewood 21 = Cow Dung 22 = Grass (reeds) 96 = Other	
SECTION 4: HOUSEHOLD CHARACTERISTICS (CONTINUED)														
What source of energy does this household mainly use for cooking?		What is the household's main source of water for drinking?	What is the distance to this source of water?	What type of toilet facility does this household mainly use?	Does the Household share this toilet facility with other households?	What is the most commonly used method of solid waste disposal from the household?		What type of bathroom does this household mainly use?		What type of kitchen does this household mainly use?				
H15	H16	H17	H18	H19	H20	H21	H22							
10 = Electricity- National grid (Umeme) 11 = Electricity- Solar 12 = Electricity- Personal Generator 13 = Electricity- Community/thermal plant 14 = Gas 15 = Liquefied Petroleum Gas (LPG) 16 = Biogas 17 = Paraffin-Stove 18 = Charcoal 19 = Firewood 20 = Cow Dung 21 = Grass (reeds) 96 = Other	10 = Piped water into dwelling 11 = Piped water to the yard 12 = Public Taps 13 = Borehole in yard/plot 14 = Public borehole 15 = Protected well/spring 16 = Unprotected well/spring 17 = River/Stream/Lake 18 = Vendor 19 = Tanker Truck 20 = Gravity Flow Scheme 21 = Rain Water 22 = Bottled Water 96 = Other	(Record distance in kms, if distance is given in miles, see distance conversion list) If the water source is on premises, record 0.0	10 = Flush Toilet 11 = VIP Latrine 12 = Covered Pit Latrine with a slab 13 = Covered Pit Latrine without a slab 14 = Uncovered Pit Latrine with a slab 15 = Uncovered Pit Latrine without a slab 16 = Ecosan (compost toilet) 17 = No facility, bush, polythene bags, bucket, etc 96 = Other	1 = Yes 2 = No 7 = N/A (For "No Facility, Bush, Polythene bags, bucket etc)	10 = Occupants dispose solid waste in the garden, and DO NOT burn or bury it. 11 = Occupants burn solid waste 12 = Occupants bury solid waste 13 = Occupants dispose solid waste in a local dump supervised by urban authorities 14 = Occupants dispose solid waste in a local dump NOT supervised by urban authorities 15 = Solid waste collected by waste vendor 16 = Occupants dispose solid waste into river/sea/stream/pond 96 = Other arrangements	10 = Inside, drainage provided 11 = Inside, no drainage provided 12 = Outside built, drainage provided 13 = Outside built, no drainage provided 14 = Make shift 15 = None 96 = Other	10 = Inside, specific room 11 = Inside, no specific room 12 = Outside, built 13 = Make shift 14 = Open space							
HOUSEHOLD ASSETS			INFORMATION	POSTAL SERVICES	MOSQUITO NETS	SOURCE OF LIVELIHOOD		REMITTANCES						
Does any member of this household own..... (ASSETS)? If Yes, record the number, if 9 or more, write 9 If none, record 0			What is the household's main source of information?	Did any member of this household send/receive a letter/parcel by postal services during the last 12 months?	Does this household have any mosquito nets?	IF YES IN H26, were the mosquito nets given free or were they bought? Record the appropriate code in the boxes below 1 = Yes; 2 = No; 7 = NA; 8 = DK		What was the main source of the household's livelihood in the last 12 months?		Did the household receive any money or physical items from any relative / family member / friend abroad during the last 12 months?		IF YES IN H29, in which countries do the relatives / family members / friends reside? 1 = Yes; 2 = No; 7 = N/A		
H23		H24	H25	H26	H27	H28	H29		H30					
A: Motor vehicle	G: Television	10 = Radio 11 = Word of Mouth 12 = Telephone 13 = Print Media 14 = Post Mail 15 = Hand Mail 16 = Television 17 = Community Meetings	1 = Yes, Once 2 = Yes, Twice 3 = Yes, Thrice 4 = Yes, 4 times and above 5 = No 8 = Don't Know	1 = Yes 2 = No	A= Given free by Gov't B= Given free by NGO C= Given free by friend/relative D= Bought	10 = Subsistence farming 11 = Commercial farming 12 = Employment income 13 = Business Enterprise 14 = Cottage Industry 15 = Property Income 16 = Family / Friends / Relatives 17 = Institutional or Program support (e.g Red Cross, WFP, e.t.c) 18 = Sale of assets 96 = Other	1 = Yes, both goods and money 2 = Yes, Money only 3 = Yes, Goods only 4 = No 8 = DK		A. Australia B. Canada C. France D. Germany E. India F. Japan G. Kenya H. Libya I. Saudi Arabia	J. South Africa K. U.K L. U.S.A M. Sweden N. United Arab Emirates O. Yemen P. South Sudan X. Other country Y. Don't know country of origin				

BOOK NUMBER		SHEET NUMBER 03		HOUSEHOLD NUMBER								
SECTION 4: HOUSEHOLD CHARACTERISTICS (CONTINUED)							SECTION 5: AGRICULTURAL MODULE					
H31	H32	H33	H34	H35	H36	H37	H38	A1	A2	A3	A4	
Does any member in this household have a functional account in the Bank or any other financial institution? (Active in last 12 months) 1= Yes, have an account in the Bank 2= Yes, have an account in another financial institution 3= Yes, have both in a bank and another financial institution 4= No 8= DK	How many meals do household members aged 5 years and above usually eat on average per day? <i>(Record number of meals in the box provided)</i>	Does every member in this household use soap to bathe? 1 = Yes 2 = No 8 = DK	Did every member in this household take sugar (at least once a day) during the last week? 1 = Yes 2 = No 8 = DK	Do you have salt in the house now? 1 = Yes 2 = No 8 = DK	Does every member in this household have at least two sets of clothing ? 1 = Yes 2 = No 8 = DK	Does every member in this household have at least one pair of shoes ? <i>WITH EXCEPTION OF CHILDREN AGED ONE YEAR OR LESS</i> 1 = Yes 2 = No 8 = DK	Does every child in this household (i.e. all those under 18 years) have a separate blanket ? 1=Yes 2=No 7=N/A	Does this household currently undertake any of the following agricultural activities? 1 =Yes, within EA 2 =Yes, outside EA but within District 3 = No	IF YES IN A1, how many does this household own?	IF YES IN A1, what is the main purpose of production? 1=Home Consumption 2=Sale 7=N/A	List the crops grown on the holding in order of importance Ser. No. Crop Name Crop Code If no crop grown, write 97	
				DE5				I. Exotic / Cross breed cattle			1	
								II. Local cattle rearing			2	
								III. Goat rearing			3	
								IV. Sheep rearing			4	
								V. Piggery (pig rearing)			5	
								VI Poultry/Birds keeping			6	
								VII. Rabbit rearing			7	
								VIII. Apiculture (Bee keeping)			8	
								IX. Aquaculture (fish farming)			9	
								X. Presence of Forest / wooded land			10	
								XI. Crop growing			11	
SECTION 6: DEATHS IN THE HOUSEHOLD IN THE LAST 12 MONTHS												
Did any deaths occur in this household in the last 12 months? I mean from September 2013 upto December 2013. What about from 1st January 2014 to 27th August 2014?	What was the name of the deceased? If no death in D1, write "Not Applicable" and end interview	What was the sex of [NAME]? 1 = Male 2 = Female 7 = N/A	How old was [NAME] at the time of death (in completed years)? <i>If age is less than one year, write 00</i>	What was the cause of [NAME'S] death? 1 = Disease 2 = Accident 3 = Violence 4 = Witchcraft 6 = Others 7 = N/A 8 = DK	D6-D8-FOR FEMALES WHO DIED AGED 12-54 YEARS Was [NAME] pregnant at the time of her death? 1= Yes 2= No 7= N/A 8= DK		Did [NAME] die while giving birth? 1= Yes 2= No 7= N/A 8= DK	Did [NAME] die within 6 weeks after delivery? 1= Yes 2= No 7= N/A 8= DK				
D1	D2	D3	D4	D5	D6	D7	D8	If there is any "YES" in A1, ask Question A5, otherwise write 97 in Question A5				
1= Yes 2= No 8= Don't know	1) 2) 3) 4) 5)							A5 Which of the household members is the lead holder? <i>(Record the person number of holder from P0) If not listed, record 00</i>	A6 Does the holding carry out any type of irrigation? 1=Yes 2=No 7=N/A	A7 Does this household own agricultural land? 1 = Yes 2 = No		
											01A	

DISTRICT OF PREVIOUS RESIDENCE (P12)						H7-H13, H17								
Central	Eastern		Northern		Western		Country of Previous Residence		Distance Conversion					
									1 mile = 1.6 km					
									Mile	Km	Mile	Km		
101 Kalangala	201	Bugiri	301	Adjumani	401	Bundibugyo	671	Kenya	0.5	=	0.8	16.5	=	26.4
102 Kampala	202	Busia	302	Apac	402	Bushenyi	672	Tanzania	1.0	=	1.6	17.0	=	27.2
103 Kiboga	203	Iganga	303	Arua	403	Hoima	673	Rwanda	1.5	=	2.4	17.5	=	28.0
104 Luwero	204	Jinja	304	Gulu	404	Kabale	674	Burundi	2.0	=	3.2	18.0	=	28.8
105 Masaka	205	Kamuli	305	Kitgum	405	Kabarole	675	South	2.5	=	4.0	18.5	=	29.6
106 Mpigi	206	Kapchorwa	306	Kotido	406	Kasese	676	Sudan	3.0	=	4.8	19.0	=	30.4
107 Mubende	207	Katakwi	307	Lira	407	Kibaale	677	Dem. Rep. Of Congo	3.5	=	5.6	19.5	=	31.2
108 Mukono	208	Kumi	308	Moroto	408	Kisoro	678	Somalia	4.0	=	6.4	20.0	=	32.0
109 Nakasongola	209	Mbale	309	Moyo	409	Masindi	679	Other	4.5	=	7.2	20.5	=	32.8
110 Rakai	210	Pallisa	310	Nebbi	410	Mbarara	680	Africa	5.0	=	8.0	21.0	=	33.6
111 Sembabule	211	Soroti	311	Nakapiripirit	411	Ntungamo	681	United Kingdom	5.5	=	8.8	21.5	=	34.4
112 Kayunga	212	Tororo	312	Pader	412	Rukungiri	682	Other Europe	6.0	=	9.6	22.0	=	35.2
113 Wakiso	213	Kaberamaido	313	Yumbe	413	Kamwenge	683	Asia 684 USA	6.5	=	10.4	22.5	=	36.0
114 Lyantonde	214	Mayuge	314	Abim	414	Kanungu	685	Canada	7.0	=	11.2	23.0	=	36.8
115 Mityana	215	Sironko	315	Amolatar	415	Kyenjojo	686	Central & Latin America	7.5	=	12.0	23.5	=	37.6
116 Nakaseke	216	Amuria	316	Amuru	416	Buliisa	687	Australia	8.0	=	12.8	24.0	=	38.4
117 Buikwe	217	Budaka	317	Dokolo	417	Ibanda	688	Oceania	8.5	=	13.6	24.5	=	39.2
118 Bukomasimbi	218	Bududa	318	Kaabong	418	Isingiro	689	Non-Ugandan-Not Stated	9.0	=	14.4	25.0	=	40.0
119 Butambala	219	Bukedea	319	Koboko	419	Kiruhura			9.5	=	15.2	25.5	=	40.8
120 Buvuma	220	Bukwo	320	Maracha	420	Buhweju			10.0	=	16.0	26.0	=	41.6
121 Gomba	221	Butaleja	321	Oyam	421	Kiryandongo			10.5	=	16.8	26.5	=	42.4
122 Kalungu	222	Kaliro	322	Agago	422	Kyegegwa			11.0	=	17.6	27.0	=	43.2
123 Kyankwanzi	223	Manafwa	323	Alebtong	423	Mitooma			11.5	=	18.4	27.5	=	44.0
124 Lwengo	224	Namutumba	324	Amudat	424	Ntoroko			12.0	=	19.2	28.0	=	44.8
	225	Bulambuli	325	Kole	425	Rubirizi			12.5	=	20.0	28.5	=	45.6
	226	Buyende	326	Lamwo	426	Sheema			13.0	=	20.8	29.0	=	46.4
	227	Kibuku	327	Napak					13.5	=	21.6	29.5	=	47.2
	228	Kween	328	Nwoya					14.0	=	22.4	30.0	=	48.0
	229	Luuka	329	Otuke					14.5	=	23.2	30.5	=	48.8
	230	Namayingo	330	Zombo					15.0	=	24.0	31.0	=	49.6
	231	Ngora							15.5	=	24.8	31.5	=	50.4
	232	Serere							16.0	=	25.6	32.0	=	51.2